

Data Report for the H.B. 3575 Eligibility System Legislative Oversight Committee

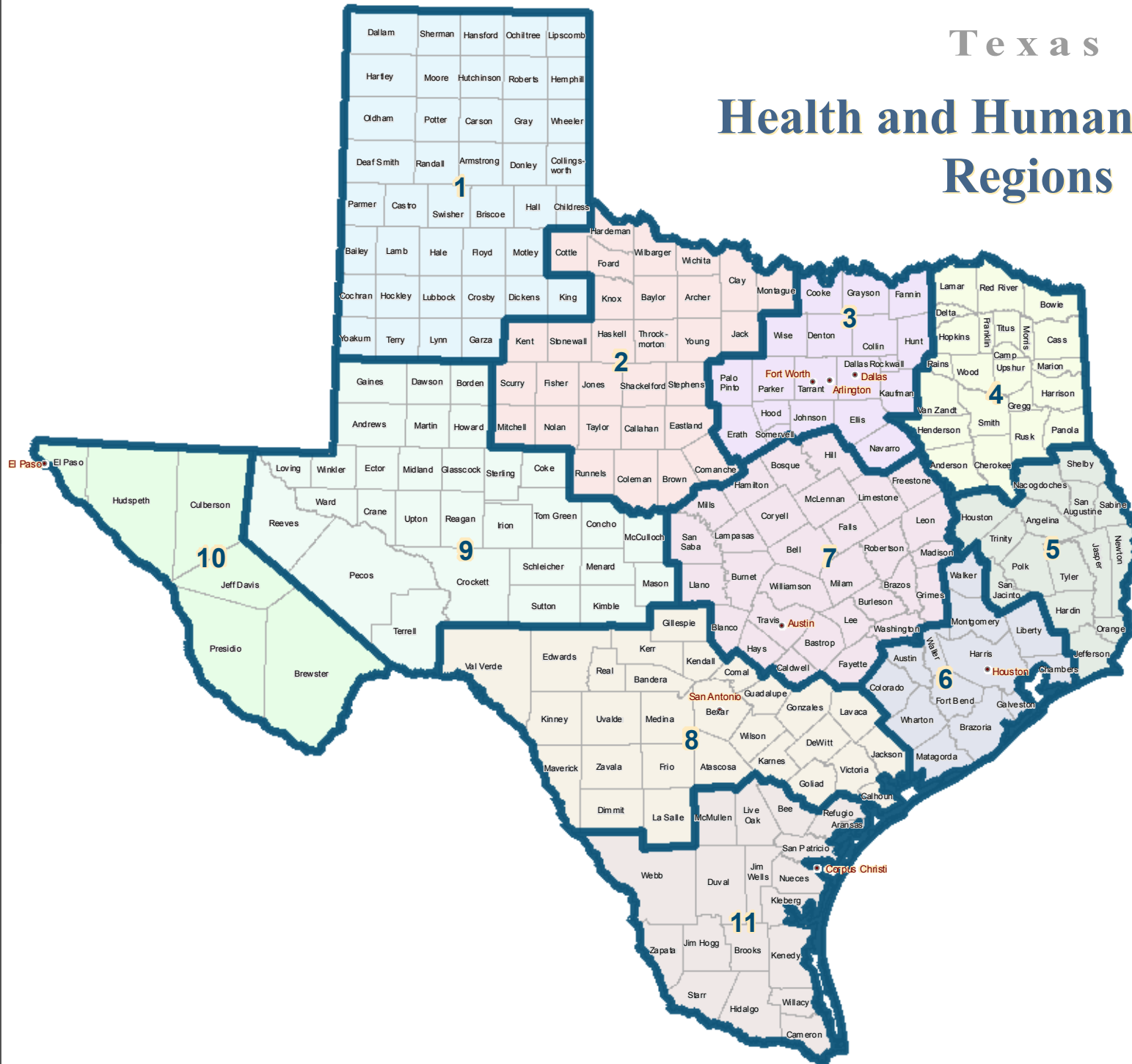


Health and Human Services Commission

September 2009

Texas

Health and Human Services Regions



HHS Regions:

- 1 High Plains
- 2 Northwest Texas
- 3 Metroplex
- 4 Upper East Texas
- 5 Southeast Texas
- 6 Gulf Coast
- 7 Central Texas
- 8 Upper South Texas
- 9 West Texas
- 10 Upper Rio Grande
- 11 Lower South Texas

Eligibility System Legislative Oversight Committee Reports

Medicaid

- Point in Time Count, Medicaid Enrollment by Month
- Point in Time Count, Medicaid Enrollment by Region
- Children's Medicaid Applications Report by Month
- Children's Medicaid Renewal Report by Month
- Women's Health Program Total Enrollment, Applications and Denials
- Statewide Medicaid Timeliness
- Medicaid Application Timeliness - SAVERR vs. TIERS

CHIP

- CHIP Enrollment and Disenrollment Rates
- CHIP Enrollment by Income Group
- CHIP Enrollment by Age Group
- CHIP Application Counts by Category
- CHIP Disenrollment by Reason – Categorized
- CHIP Disenrollment by Reason – Categorized Percents
- Category Descriptions for CHIP Disenrollment Reasons
- CHIP Perinatal Enrollment by Month
- Migration for Coverage between CHIP and Medicaid – Monthly Averages
- Average Length of Continuous CHIP and Children's Medicaid Coverage

TANF

- TANF Cases and Recipients by Month
- TANF Denial Codes
- TANF Applications Report by Month
- TANF Renewal Report by Month
- Statewide TANF Timeliness

SNAP

- SNAP Statewide Cases and Recipients by Month
- SNAP Applications Report by Month
- SNAP Renewal Report by Month
- Statewide SNAP Timeliness
- SNAP Application Timeliness - SAVERR vs. TIERS
- SNAP Recertification Timeliness - SAVERR vs. TIERS

Eligibility Staffing

- Eligibility Determination Staffing and Average Recipients per Worker Graph: FY 1995 – FY 2008
- Eligibility Determination Staffing Head Count by Month
- Eligibility Staff Turnover by Job Title, by Region, and by Centralized Unit
- Eligibility Staff Years of Service for Supervisors and Eligibility Workers

TIERS

- TIERS Case Mix – Statewide, In-Pilot, and Outside-Pilot

Quality Control

- Monthly Quality Control Report for SNAP, TANF and Children's Medicaid

Complaints

- Complaints Received by Office of the Ombudsman by Region

Outreach

- Statewide Quarterly Report of Community-based Organization Outreach Activities
- Statewide Quarterly Report of Food Bank Network and Outreach Contractors Activities

Call Centers

- Reports for CHIP and Eligibility Support Call Centers
 - Calls Queued, Abandoned
 - Calls Queued, Average Speed to Answer and Average Handle Time

HHSC Program Data Available at:
<http://www.hhsc.state.tx.us/research>

Children's Medical Assistance

- Enrollment Totals by Month for Children: Children's Medicaid, CHIP and CHIP Perinatal Coverage

Medicaid

- Final Count - Medicaid Enrollment by Month (September 2001 - February 2009)
- Final Count - Medicaid Enrollment by County (March 2006 - February 2009)
- Point in Time - Medicaid Enrollment by County (September 2006 – September 2009)
- Women's Health Program Medicaid Enrollment by Month (January 2007- September 2009)

CHIP

- *Statewide CHIP Enrollment, Renewals, Attempted Renewals, and Disenrollment by Month (May 2000 – September 2009)
- CHIP Enrollment by Coverage Area, Plan and Age (May 2006 to September 2009)
- CHIP Enrollment, Renewals, Attempted Renewals, and Disenrollment by County (September 2002 to September 2009)
- CHIP Enrollment by County and Month (Fiscal Years 2006—Year to Date 2009)
- *CHIP Data by Month and Federal Poverty Level (May 2000 – September 2009)
- CHIP Perinatal Coverage Enrollment by Coverage Area, Plan and Category (January 2007 to August 2009)
- Texas CHIP Perinatal Coverage Enrollment by County (January 2007 to August 2009)
- *CHIP Perinatal Coverage Enrollment by Month (January 2007 to July 2009)

TANF

- TANF Cases and Recipients by County (September 2005 – July 2009)
- TANF Case and Payment Summary by County (September 2005 – July 2009)

SNAP

- SNAP Cases and Recipients by County (September 2005 – August 2009)
- SNAP Applications by Benefit Month (September 2005 – September 2006)

Program Timeliness

- Timeliness Reports by Month by Region for SNAP, Medicaid and TANF (May 2006 – August 2009)

*These reports are included in the Oversight Committee's packet

Data Report for the H.B. 3575 Eligibility System Legislative Oversight Committee

Data Synopsis and Analysis

This is the sixth eligibility system data report submitted to the Legislative Oversight Committee. The following synopsis provides a comparison to the prior period.

Medicaid

The Medicaid data tables provided in this report are based on point-in-time counts, which reflect the number of individuals who are eligible to receive Medicaid services during the benefit month. These data are not the final counts used for budgetary purposes. Final count data include retroactive coverage for eligible individuals.

- In August 2009, 2,764,326 persons were eligible to receive Medicaid benefits.
- Medicaid enrollment in August increased by a little more than 141,000 from the December 2008 figures shown in the previous report.
- Medicaid enrollment grew by almost 150,000 from this same time last year.
- In August 2009, there were 1,858,081 children enrolled in Children's Medicaid programs.
- Between December 2008 and August 2009, enrollment in these programs increased by about 117,000 children.
- As about 67% of total Medicaid enrollment is comprised of Children's Medicaid programs.
- There were 1.9 million children enrolled in Children's Medicaid programs, and 2.0 million children enrolled in Medicaid. The difference between these two figures reflects whether enrollment in Medicaid is dependent upon age as an enrollment criterion (e.g., disabled programs).
- The Women's Health Program was implemented in January 2007. During fiscal year 2009, about 85,000 women were enrolled each month.
- Over the past 6 months of reported data (February – July 2009), about 10,600 applications are processed each month for the Women's Health Program. Of these, about 65% are approved.
- During the last 12 months, about 82% of Medicaid applications received were processed timely, and 99% of Medicaid renewals were processed timely. The decline in application timeliness is attributed to an increased workload due to the worsening economy.

CHIP

The passage and implementation of H.B. 109 had a marked impact on the CHIP caseload. The change from 6-months to 12-months continuous coverage began to impact observed caseloads in March 2008.

- In August 2009, 490,603 children were enrolled in CHIP.
- Caseloads have been on the rise all year, but the month-to-month increases have been relatively modest.
- The CHIP caseload has increased by about 27,000 since September 2008.
- In July 2009, 63,245 persons were enrolled in the CHIP Perinatal Program. Of these:
 - 26,527 are infants, and
 - 36,718 are pregnant women.

A study on migration between Children's Medicaid and CHIP was recently completed. In this study, the movement of children between the two programs was examined over the past eight years. In summary, this study showed that:

- Of the 19,000 children leaving CHIP each month for any reason during fiscal year 2008;
 - 28% returned to CHIP within 12-months, and
 - 47% migrated to Medicaid within 12-months.
- Of the 98,000 children leaving Medicaid each month for any reason during fiscal year 2008;
 - 48% returned to Medicaid within 12-months, and
 - 17% migrated to CHIP within 12-months.

TANF

- In July 2009, the TANF caseload consisted of:
 - 100,005 recipients in 43,204 cases in the Basic program
 - 4,294 recipients in 1,016 cases in the State program
 - In the TANF Basic Program:
 - There are 86,470 children and 13,535 adults enrolled.
 - The average payment is \$68 per recipient and \$158 per case.
 - In the TANF State Program:
 - There are 2,262 children and 2,032 adults enrolled.
 - The average payment is \$68 per recipient and \$286 per case.

- During the last 12 months, a little more than 87% of TANF applications received were processed in a timely fashion, while 96% of TANF renewals were processed timely.

Food Stamps

- In August, there were 2,802,706 recipients receiving Food Stamp benefits.
- Since September, Food Stamps enrollment has increased by more than 208,000 clients. Most of this growth is due to the tropical storms and hurricanes affecting the Texas coast, and to the continuing worsening of the Texas economy.
- Of the 2.8 million Food Stamp recipients, 1.6 million were children under age 18.
- The 2.8 million recipients are contained within 1,099,139 cases.
- The average monthly benefit per case is \$313.
- During the last 12 months, about 74% of Food Stamp applications received were processed in a timely fashion, while about 84% of Food Stamp redeterminations were processed timely.
- As was observed with Medicaid, Food Stamp timeliness is being impacted by increased workloads.

Administrative Processes

- During the month of December 2008, there were 7,700 eligibility determination staff. This represents a net increase of 872 staff or an increase of a little more than 12% since September.
- Of these, 6,682 were determining eligibility for Texas Works programs, while 1,018 worked on Medicaid programs.
- Comparing July 2009 staffing levels with those of September 2008, there are 669 more staff determining eligibility for Texas Works programs, and 203 more staff working Medicaid program cases.
- The average turnover rate for eligibility workers so far in FY 2009 is 16.8%, which is down from 22.2% in both 2007 and 2008.
- The average turnover for supervisors was 9.2%, which is up from 6.1% in 2008 and 8.2% in 2007, but markedly reduced from 23.5% in 2006.
- In 2004, only 4% of eligibility workers had less than 3 years experience. In 2008, 35% of eligibility works have less than 3 years experience.
- In 2004 about 81% of eligibility workers had 5 years or more experience; in 2008 61% of workers had similar level of experience.
- Beginning in October 2008, offices in Region 7 converted to TIERS according to a published conversion schedule. As the geographic area in which TIERS is used continues to grow, the comparison of TIERS cases processed within the pilot

areas become less and less useful. As such, these data are no longer included in this report.

- Currently, about 20% of the caseload is being processed in TIERS.
- In July 2009, the CHIP Call Center received 125,120 calls.
 - The abandonment rate was less than 1%.
 - The average time to handle a call was about 5.8 minutes.
 - The average time to answer a call was 10 seconds.
- In July 2009, the Eligibility Support Call Center received 321,834 calls.
 - The abandonment rate was 6.2%.
 - The average time to handle a call was about 7.1 minutes.
 - The average time to answer a call was about 73 seconds.

Point in Time Count¹ - Medicaid Enrollment by Month - January 2007 through August 2009

	Total Enrollment	Total Enrollment in Children's Medicaid ²	Total Children Under Age 19 Enrolled in Medicaid ³	Aged	Disabled & Blind	TANF Adults	TANF Children	Foster Care Children	Pregnant Women	Newborns	Children Age 1-5	Children Age 6-18	Medically Needy
Jan-07	2,514,956	1,658,758	1,761,486	272,908	402,679	39,404	193,484	29,431	105,881	137,366	604,216	694,261	35,326
Feb-07	2,517,971	1,662,273	1,766,377	272,559	404,375	38,369	192,421	29,805	105,795	140,328	606,317	693,402	34,600
Mar-07	2,513,118	1,659,357	1,763,507	272,078	404,662	37,313	188,617	30,279	105,267	141,060	607,580	691,821	34,441
Apr-07	2,525,451	1,669,649	1,775,981	272,055	407,771	36,892	185,480	30,518	105,141	140,372	614,895	698,384	33,943
May-07	2,591,447	1,731,031	1,838,900	271,189	409,388	36,899	184,307	30,726	109,509	142,455	642,406	731,137	33,431
Jun-07	2,611,702	1,749,263	1,857,114	271,038	410,535	37,310	184,275	31,057	110,328	141,091	648,710	744,130	33,228
Jul-07	2,595,235	1,731,913	1,840,409	270,975	413,062	37,349	183,237	31,053	109,131	140,237	640,040	737,346	32,805
Aug-07	2,608,424	1,742,193	1,850,714	271,175	413,826	36,983	183,584	30,599	111,989	139,730	644,264	744,016	32,258
Sep-07	2,596,004	1,726,899	1,836,498	271,164	416,817	37,374	185,355	29,826	111,902	138,531	636,589	736,598	31,848
Oct-07	2,557,432	1,690,107	1,799,952	271,507	418,130	36,583	182,419	29,434	109,801	137,140	621,055	720,059	31,304
Nov-07	2,600,742	1,729,649	1,840,268	272,225	419,495	37,074	185,828	29,405	111,324	140,104	636,220	738,092	30,975
Dec-07	2,607,281	1,737,826	1,849,577	271,823	420,847	37,377	187,418	29,416	108,450	138,783	638,381	743,828	30,958
Jan-08	2,585,832	1,716,098	1,827,956	272,755	423,844	37,158	187,654	29,564	105,265	138,537	625,956	734,387	30,712
Feb-08	2,569,072	1,699,584	1,813,185	272,304	426,173	36,269	187,386	30,331	104,296	140,308	617,131	724,428	30,446
Mar-08	2,557,153	1,685,570	1,800,563	271,754	428,318	35,704	184,771	30,747	105,930	141,143	612,761	716,148	29,877
Apr-08	2,590,020	1,713,673	1,830,409	271,507	430,556	35,479	183,965	31,669	109,199	143,959	626,394	727,686	29,606
May-08	2,581,677	1,707,327	1,823,331	271,310	430,440	35,421	182,445	32,340	107,984	143,693	625,035	723,814	29,195
Jun-08	2,601,347	1,722,896	1,840,480	271,363	434,063	35,888	182,176	32,558	108,300	142,446	630,552	735,164	28,837
Jul-08	2,628,236	1,744,621	1,863,058	271,483	436,813	35,999	183,257	33,207	110,740	144,275	637,245	746,637	28,580
Aug-08	2,614,810	1,732,910	1,850,747	270,484	437,311	35,905	183,437	32,877	110,268	143,862	632,628	740,106	27,932
Sep-08	2,607,602	1,722,870	1,841,385	270,829	440,055	36,292	184,273	33,039	109,978	144,006	625,487	736,065	27,578
Oct-08	2,571,200	1,688,116	1,806,416	271,340	440,965	35,423	181,644	33,075	108,211	143,707	609,312	720,378	27,145
Nov-08	2,617,602	1,731,698	1,851,473	271,355	444,153	36,067	184,412	32,805	107,223	147,482	623,646	743,353	27,106
Dec-08	2,623,215	1,741,075	1,860,644	270,485	443,476	36,396	186,370	32,569	105,433	147,366	624,217	750,553	26,350
Jan-09	2,550,388	1,669,102	1,788,604	270,416	446,164	36,569	186,320	31,991	102,787	148,089	588,657	714,045	25,350
Feb-09	2,619,736	1,736,806	1,857,963	269,900	448,878	36,922	187,732	31,692	102,354	151,106	617,358	748,918	24,876
Mar-09	2,622,588	1,738,862	1,860,359	268,608	450,418	37,399	188,567	31,733	102,431	152,114	616,648	749,800	24,870
Apr-09	2,666,658	1,777,705	1,900,424	268,609	452,523	36,990	186,432	31,463	105,726	155,735	634,049	770,026	25,105
May-09	2,675,871	1,784,842	1,907,795	268,287	453,504	38,075	187,904	31,385	105,353	155,919	635,203	774,431	25,810
Jun-09	2,724,403	1,827,248	1,951,410	269,046	457,263	38,665	188,585	30,793	105,641	155,223	650,687	801,960	26,540
Jul-09	2,762,525	1,859,261	1,983,341	269,622	459,096	38,911	189,467	30,783	108,534	157,080	661,343	820,588	27,101
Aug-09	2,764,326	1,858,081	1,982,696	269,374	461,395	39,412	191,030	30,485	108,870	155,073	659,022	822,471	27,194

¹Point in time count reports released by HHSC offer a preliminary look at enrollment for any given month. The numbers are not final because Medicaid offers up to three months of retroactive coverage for eligible individuals. It takes about eight months to determine the final count for Medicaid enrollment.

²Total Enrollment in Children's Medicaid is the total number of children in the following categories: TANF Children, Foster Care Children, Newborns, Children Age 1-5 and Children Age 6-14. The children in these categories qualify for Medicaid based on their age and family income.

³Total Children Under Age 19 Enrolled in Medicaid is the total number of Medicaid clients under the age of 19. There are people under age 19 who qualify for Medicaid for reasons other than age and family income. For example, a 17-year-old who is pregnant may qualify for Medicaid for "Pregnant Women" or a 16-year-old boy who is blind may qualify for Medicaid for "Disabled & Blind."

Data Source: Texas Health and Human Services Commission. Monthly Medicaid Eligibles File Extract and Texas Medicaid Historical (8-Month) Enrollment File.

Table Prepared By: Strategic Decision Support, Texas Health and Human Services Commission

Point in Time Count¹ - Medicaid Enrollment by Month by Region - January 2007 through August 2009

	Region 1	Region 2	Region 3	Region 4	Region 5	Region 6	Region 7	Region 8	Region 9	Region 10	Region 11	Unknown	TEXAS
Jan-07	88,312	58,620	493,730	122,866	93,737	531,630	213,050	296,764	69,101	129,709	416,298	1,139	2,514,956
Feb-07	88,009	58,590	495,058	123,029	93,480	534,769	212,169	295,022	69,018	129,312	418,307	1,208	2,517,971
Mar-07	86,528	58,605	496,599	123,063	92,873	533,396	212,455	292,237	68,487	128,267	419,357	1,251	2,513,118
Apr-07	87,543	60,537	502,138	122,935	93,518	537,079	210,756	292,698	65,680	126,806	420,672	5,087	2,525,449
May-07	89,953	62,119	516,795	124,845	94,891	554,464	215,303	302,646	66,996	130,568	427,899	4,966	2,591,445
Jun-07	90,290	62,312	521,443	125,541	95,099	561,111	216,656	307,014	67,347	130,691	429,170	5,028	2,611,702
Jul-07	89,676	62,028	516,818	124,477	94,252	559,155	215,421	305,759	66,709	129,611	426,183	5,146	2,595,235
Aug-07	90,218	62,359	520,500	124,561	94,898	563,396	215,795	306,136	66,882	130,906	427,700	5,073	2,608,424
Sep-07	89,451	62,133	517,448	124,400	94,632	561,215	214,954	303,629	66,598	129,967	426,427	5,150	2,596,004
Oct-07	86,791	61,329	507,912	123,029	93,583	556,309	209,233	299,597	65,868	126,415	422,217	5,149	2,557,432
Nov-07	88,160	61,974	518,049	124,382	94,929	565,551	213,046	304,567	66,729	128,693	429,445	5,217	2,600,742
Dec-07	88,250	61,733	521,996	124,605	94,624	565,677	215,099	304,256	66,083	128,303	431,354	5,301	2,607,281
Jan-08	87,137	61,447	518,266	123,847	93,904	561,308	213,764	299,757	65,399	126,847	429,103	5,053	2,585,832
Feb-08	86,741	60,945	517,520	123,344	93,476	556,782	212,400	294,359	64,685	126,338	427,250	5,232	2,569,072
Mar-08	86,302	60,884	514,720	122,831	92,739	553,268	213,531	291,061	64,212	126,146	425,971	5,488	2,557,153
Apr-08	87,586	61,588	521,095	124,337	93,702	561,170	218,161	292,229	64,655	127,830	432,070	5,597	2,590,020
May-08	86,613	61,226	521,172	123,472	92,497	561,632	221,432	289,572	64,516	126,670	427,460	5,415	2,581,677
Jun-08	86,993	61,318	525,892	123,985	92,420	569,803	225,758	291,514	64,716	126,877	428,618	3,453	2,601,347
Jul-08	87,544	61,773	532,301	125,199	93,693	576,825	227,076	297,537	65,313	126,932	430,556	3,487	2,628,236
Aug-08	86,507	60,835	529,120	124,171	93,063	576,096	230,485	299,401	61,626	125,589	426,161	1,756	2,614,810
Sep-08	85,571	60,563	528,292	123,133	93,082	575,608	230,314	301,128	61,040	124,974	421,930	1,967	2,607,602
Oct-08	84,990	59,794	517,002	121,645	92,195	568,048	225,131	299,024	60,008	123,413	417,031	2,919	2,571,200
Nov-08	87,113	60,091	526,200	122,670	94,562	580,715	230,175	303,951	60,510	126,305	421,997	3,313	2,617,602
Dec-08	87,042	59,928	523,747	122,138	97,260	590,400	230,445	302,012	60,225	126,618	419,641	3,759	2,623,215
Jan-09	85,314	58,993	515,876	120,832	91,655	550,838	226,198	297,462	59,548	124,025	413,674	5,973	2,550,388
Feb-09	85,006	58,735	519,618	120,648	94,500	609,055	229,890	299,493	58,856	122,853	414,665	6,417	2,619,736
Mar-09	83,782	58,428	522,221	121,667	95,161	605,700	232,660	299,722	58,349	121,885	416,303	6,710	2,622,588
Apr-09	88,042	59,382	547,947	124,465	93,462	587,004	239,403	307,989	59,461	127,246	425,096	7,161	2,666,658
May-09	89,316	60,083	561,132	125,648	94,519	563,715	246,133	312,839	60,314	129,073	425,678	7,421	2,675,871
Jun-09	90,186	61,030	567,319	127,535	97,318	584,002	249,898	317,522	61,773	130,336	429,633	7,851	2,724,403
Jul-09	92,114	61,935	579,230	128,229	97,665	594,787	251,911	321,669	62,789	132,200	438,301	1,695	2,762,525
Aug-09	92,962	61,702	576,799	127,404	96,774	602,254	251,855	321,821	63,036	132,955	435,077	1,687	2,764,326

*Point in time count reports released by HHSC offer a preliminary look at enrollment for any given month. The numbers are not final because Medicaid offers up to three months of retroactive coverage for eligible individuals. It takes about eight months to determine the final count for Medicaid enrollment.

Note: Beginning with the benefit month of April 2007, geocoding is used to determine the county of residence of Medicaid enrollees. In this process, Geographic Information Systems (GIS) technology is used to translate address data into geographic coordinates (latitude and longitude) which also provides county of residence data. Enrollees without a final county of residence designation are accounted for in the category of "Unknown" under the county of residence column. Compared to the period before April 2007, the number of enrollees without a final county of residence designation has increased due to the stricter address verification standards associated with GIS technology.

Data Source: Texas Health and Human Services Commission. Monthly Medicaid Eligibles File Extract.

Table Prepared By: Strategic Decision Support, Texas Health and Human Services Commission

Medical Programs Reasons for Denial

Death of Child
Earnings
Earnings of Father
Earnings of Mother
Earnings of Child
Earnings of Non-Parent Caretaker
Support from Absent Father
Support from Relative in Household
Support from Person Outside the Home
RSDI (social security benefit)
Other Federal Benefits
State and Local Pensions or Benefits
Non-Governmental Pensions or Benefits
Excess Assets Income
Excess Assets — Resources
Fewer Members in Certified Group
Conflicting Information on Management (conflict regarding possible unreported additional income)
Refusal to Furnish Information
Refusal to Follow Agreed Plan to pursue potential income
Automatic Denial (Automatic denial because of anticipated pregnancy termination)
Refusal to Obtain Medical Information for Pregnancy or Disability Determinations
Parent Not Incapacitated
Legal Marriage
Child Admitted to Institution
No Eligible Child
Residence
Citizenship or Acceptable Alien Status
Open/Close Coverage (deemed ineligible at renewal)
Failure to Furnish Information
Other Eligibility Requirements
Appointment Not Kept
Unable to Locate
Refugee Exceeds Eight-Month Limit
Filed In Error
Voluntary Withdrawal
Other Miscellaneous
Provide Absent Parent's Info or Location
Provide Verification of Citizenship
Monthly Income Exceeds Maximum Limits

Denial codes and related information are available at:

<http://www.dads.state.tx.us/handbooks/TexasWorks/C/200/232.htm>

Children's Medicaid Application Report, January 2007 - August 2009

BENEFIT MONTH	Applications Approved	Application Approval Rate	Total Applications Denied	No Eligible Child		Income		Assets		Missing Information		Other	
				#	%	#	%	#	%	#	%	#	%
Jan-07	86,863	75.5%	28,131	1,415	5.0%	9,923	35.3%	460	1.6%	11,034	39.2%	5,299	18.8%
Feb-07	100,386	76.7%	30,454	1,696	5.6%	10,574	34.7%	509	1.7%	12,446	40.9%	5,229	17.2%
Mar-07	91,452	79.8%	23,107	1,408	6.1%	9,002	39.0%	426	1.8%	8,235	35.6%	4,036	17.5%
Apr-07	98,066	79.4%	25,497	1,391	5.5%	9,516	37.3%	586	2.3%	9,794	38.4%	4,210	16.5%
May-07	121,489	79.6%	31,110	2,096	6.7%	11,435	36.8%	667	2.1%	11,058	35.5%	5,854	18.8%
Jun-07	87,540	78.3%	24,217	1,368	5.6%	9,160	37.8%	593	2.4%	8,730	36.0%	4,366	18.0%
Jul-07	78,627	77.5%	22,833	1,257	5.5%	8,486	37.2%	509	2.2%	8,727	38.2%	3,854	16.9%
Aug-07	95,233	77.6%	27,559	1,449	5.3%	10,940	39.7%	561	2.0%	10,312	37.4%	4,297	15.6%
Sep-07	81,040	78.0%	22,912	1,207	5.3%	9,054	39.5%	513	2.2%	8,562	37.4%	3,576	15.6%
Oct-07	76,810	76.9%	23,025	1,148	5.0%	9,225	40.1%	456	2.0%	8,586	37.3%	3,610	15.7%
Nov-07	115,511	76.5%	35,412	1,805	5.1%	14,213	40.1%	599	1.7%	12,496	35.3%	6,299	17.8%
Dec-07	73,285	73.3%	26,652	1,371	5.1%	10,564	39.6%	441	1.7%	9,777	36.7%	4,499	16.9%
Jan-08	65,803	73.1%	24,214	1,252	5.2%	9,188	37.9%	392	1.6%	9,089	37.5%	4,293	17.7%
Feb-08	73,760	73.9%	26,062	1,406	5.4%	9,923	38.1%	422	1.6%	9,999	38.4%	4,312	16.5%
Mar-08	71,381	76.7%	21,742	1,221	5.6%	9,235	42.5%	386	1.8%	7,297	33.6%	3,603	16.6%
Apr-08	87,604	75.0%	29,270	1,677	5.7%	10,942	37.4%	519	1.8%	10,768	36.8%	5,364	18.3%
May-08	64,955	74.4%	22,394	1,240	5.5%	7,968	35.6%	439	2.0%	8,259	36.9%	4,488	20.0%
Jun-08	73,114	75.9%	23,165	1,495	6.5%	9,055	39.1%	428	1.8%	8,059	34.8%	4,128	17.8%
Jul-08	83,286	74.0%	29,203	1,710	5.9%	10,936	37.4%	507	1.7%	10,624	36.4%	5,426	18.6%
Aug-08	56,734	72.5%	21,508	1,088	5.1%	7,744	36.0%	395	1.8%	7,473	34.7%	4,808	22.4%
Sep-08	64,928	73.6%	23,230	993	4.3%	8,912	38.4%	431	1.9%	7,729	33.3%	5,165	22.2%
Oct-08	63,434	73.2%	23,166	1,103	4.8%	8,757	37.8%	381	1.6%	8,319	35.9%	4,606	19.9%
Nov-08	80,599	73.4%	29,147	1,264	4.3%	10,896	37.4%	434	1.5%	10,879	37.3%	5,674	19.5%
Dec-08	62,868	72.1%	24,280	994	4.1%	8,940	36.8%	353	1.5%	8,550	35.2%	5,443	22.4%
Jan-09	61,028	70.4%	25,604	970	3.8%	8,711	34.0%	350	1.4%	9,470	37.0%	6,103	23.8%
Feb-09	101,716	76.7%	30,930	1,587	5.1%	11,172	36.1%	426	1.4%	11,138	36.0%	6,607	21.4%
Mar-09	76,287	53.7%	25,618	1,034	4.0%	9,581	37.4%	449	1.8%	8,656	33.8%	5,898	23.0%
Apr-09	96,489	53.7%	34,075	1,501	4.4%	11,711	34.4%	726	2.1%	13,573	39.8%	6,564	19.3%
May-09	70,550	72.9%	26,195	1,177	4.5%	8,581	32.8%	546	2.1%	10,284	39.3%	5,607	21.4%
Jun-09	71,175	73.7%	25,400	1,300	5.1%	8,544	33.6%	548	2.2%	9,374	36.9%	5,634	22.2%
Jul-09	82,004	71.7%	32,440	1,813	5.6%	10,171	31.4%	632	1.9%	11,427	35.2%	8,397	25.9%
Aug-09	62,372	72.2%	23,968	1,395	5.8%	7,931	33.1%	405	1.7%	8,766	36.6%	5,471	22.8%
12 mo avg	74,454	69.8%	27,004	1,261	4.7%	9,492	35.3%	473	1.7%	9,847	36.4%	5,931	22.0%

* The Application Approval Rate is the number of applications approved divided by the total number of applications processed (= approved + denied).

**The "Other" category includes denial reasons that may be specific to only a few programs, or only to a specific condition (like death of a child) and are not easily classified into the main categories. These include:

Death of the child that was on the case.	No eligible child.	Citizenship not provided
Adult on or applying for TP55 not incapacitated.	Residency requirement not met.	Open/close
Eligible child now in institution.	Filed in error	Other
Spenddown	Vol Withdrawal	

TIERS data is included in this report. DEC-07 AND SUBSEQUENT MONTHS DO NOT INCLUDE TIERS DATA

Children's Medicaid Renewal Report, January 2007 - August 2009

BENEFIT MONTH	Renewals	Renewal Approval Rate*	Total Cases Denied	No Eligible Child		Income		Assets		Missing Information**		Renewal Info Not Received		Non-Compliance		Other***	
				#	%	#	%	#	%	#	%	#	%	#	%	#	%
Jan-07	80,643	51.6%	75,535	927	1.2%	6,288	8.3%	235	0.3%	4,662	6.2%	61,583	81.5%	31	0.0%	1,809	2.4%
Feb-07	88,704	51.4%	83,763	928	1.1%	6,260	7.5%	198	0.2%	4,703	5.6%	69,998	83.6%	66	0.1%	1,610	1.9%
Mar-07	86,095	53.1%	76,117	907	1.2%	5,445	7.2%	168	0.2%	4,091	5.4%	63,824	83.8%	50	0.1%	1,632	2.1%
Apr-07	93,518	56.4%	72,248	1,081	1.5%	5,706	7.9%	167	0.2%	5,057	7.0%	58,023	80.3%	66	0.1%	2,148	3.0%
May-07	107,642	63.4%	62,217	1,069	1.7%	6,134	9.9%	306	0.5%	6,660	10.7%	45,745	73.5%	52	0.1%	2,251	3.6%
Jun-07	101,043	63.5%	58,003	1,005	1.7%	6,372	11.0%	306	0.5%	6,027	10.4%	42,113	72.6%	57	0.1%	2,123	3.7%
Jul-07	97,253	58.1%	70,192	1,027	1.5%	7,312	10.4%	387	0.6%	6,511	9.3%	52,686	75.1%	69	0.1%	2,200	3.1%
Aug-07	102,735	60.8%	66,226	1,136	1.7%	7,095	10.7%	311	0.5%	7,078	10.7%	45,600	68.9%	72	0.1%	4,934	7.5%
Sep-07	93,051	57.3%	69,201	1,117	1.6%	6,838	9.9%	239	0.3%	6,420	9.3%	50,820	73.4%	62	0.1%	3,705	5.4%
Oct-07	77,132	50.4%	75,873	940	1.2%	6,602	8.7%	236	0.3%	6,294	8.3%	58,567	77.2%	70	0.1%	3,164	4.2%
Nov-07	106,034	60.7%	68,747	1,149	1.7%	8,121	11.8%	251	0.4%	6,615	9.6%	50,236	73.1%	75	0.1%	2,300	3.3%
Dec-07	85,742	58.4%	60,970	1,032	1.7%	7,031	11.5%	211	0.3%	5,309	8.7%	45,913	75.3%	48	0.1%	1,426	2.3%
Jan-08	76,814	52.2%	70,449	956	1.4%	6,996	9.9%	189	0.3%	4,591	6.5%	56,726	80.5%	45	0.1%	946	1.3%
Feb-08	89,750	53.9%	76,817	975	1.3%	6,970	9.1%	213	0.3%	4,382	5.7%	63,161	82.2%	55	0.1%	1,061	1.4%
Mar-08	87,847	54.9%	72,143	918	1.3%	6,047	8.4%	186	0.3%	4,192	5.8%	59,729	82.8%	60	0.1%	1,011	1.4%
Apr-08	103,937	60.5%	67,798	1,057	1.6%	6,378	9.4%	272	0.4%	5,642	8.3%	53,435	78.8%	33	0.0%	981	1.4%
May-08	85,620	56.2%	66,681	857	1.3%	5,602	8.4%	241	0.4%	4,106	6.2%	54,695	82.0%	51	0.1%	1,129	1.7%
Jun-08	84,650	59.6%	57,392	900	1.6%	5,250	9.1%	232	0.4%	3,475	6.1%	46,638	81.3%	46	0.1%	851	1.5%
Jul-08	108,968	63.3%	63,171	1,086	1.7%	6,902	10.9%	319	0.5%	5,258	8.3%	48,494	76.8%	36	0.1%	1,076	1.7%
Aug-08	81,547	56.6%	62,655	823	1.3%	5,755	9.2%	243	0.4%	4,466	7.1%	50,359	80.4%	32	0.1%	977	1.6%
Sep-08	88,666	58.1%	63,849	902	1.4%	6,001	9.4%	209	0.3%	4,758	7.5%	50,989	79.9%	15	0.0%	975	1.5%
Oct-08	73,775	49.8%	74,283	789	1.1%	6,045	8.1%	199	0.3%	4,587	6.2%	61,591	82.9%	36	0.0%	1,036	1.4%
Nov-08	58,568	52.3%	53,370	546	1.0%	3,965	7.4%	141	0.3%	3,110	5.8%	44,951	84.2%	21	0.0%	636	1.2%
Dec-08	60,583	55.4%	48,748	574	1.2%	3,323	6.8%	109	0.2%	2,776	5.7%	41,384	84.9%	8	0.0%	574	1.2%
Jan-09	76,322	45.9%	89,872	875	1.0%	5,817	6.5%	171	0.2%	3,946	4.4%	78,165	87.0%	36	0.0%	862	1.0%
Feb-09	71,371	53.7%	61,473	743	1.2%	5,063	8.2%	136	0.2%	3,327	5.4%	51,324	83.5%	68	0.1%	812	1.3%
Mar-09	81,838	54.0%	69,796	823	1.2%	5,056	7.2%	170	0.2%	3,262	4.7%	59,536	85.3%	56	0.1%	893	1.3%
Apr-09	103,923	58.5%	73,585	1,066	1.4%	5,506	7.5%	296	0.4%	5,266	7.2%	60,228	81.8%	69	0.1%	1,154	1.6%
May-09	80,860	54.6%	67,123	953	1.4%	5,478	8.2%	302	0.4%	5,170	7.7%	54,155	80.7%	45	0.1%	1,020	1.5%
Jun-09	62,788	58.4%	44,637	646	1.4%	3,314	7.4%	236	0.5%	3,719	8.3%	35,892	80.4%	27	0.1%	803	1.8%
Jul-09	90,946	60.3%	59,975	883	1.5%	5,193	8.7%	360	0.6%	4,499	7.5%	47,910	79.9%	33	0.1%	1,097	1.8%
Aug-09	79,365	57.8%	57,951	817	1.4%	4,657	8.0%	256	0.4%	3,602	6.2%	47,783	82.5%	29	0.1%	807	1.4%
12 mo avg	77,417	54.9%	63,722	801	1.3%	4,952	7.8%	215	0.3%	4,002	6.4%	52,826	82.7%	37	0.1%	889	1.4%

* The Renewal Approval Rate is the number of renewals divided by the total number of reviews processed (= renewals+cases denied).

** Renewal information not received includes cases that are automatically closed because the client did not submit renewal or the because application timed out.

***The "Other" category includes denial reasons that may be specific to only a few programs, or only to a specific condition (like death of a child) and are not easily classified into the main categories. These include:

Death of the child that was on the case.	Other – TP45 aged out or mother's income was too high	No eligible child.
Auto denial due to the pregnancy being delivered	Refugee at end of 8 month elig. Period	Residency requirement not met.
Adult on or applying for TP55 not incapacitated.	Filed in error	Don't meet citizenship or alien status requirements
Eligible child now in institution.	Vol Withdrawal	Open/close
Spenddown	Citizenship not provided	Other

TIERS data is included in this report. DEC-07 AND SUBSEQUENT MONTHS DO NOT INCLUDE TIERS DATA

Women's Health Program

	Total Enrollment*	Applications Received	Applications Denied	Percent of Applications Denied
Jan-07	9,278	823	97	11.8%
Feb-07	18,426	6,921	1,758	25.4%
Mar-07	27,818	12,075	4,014	33.2%
Apr-07	36,277	16,214	5,245	32.3%
May-07	45,013	13,489	3,593	26.6%
Jun-07	52,213	9,710	3,012	31.0%
Jul-07	58,058	13,263	4,034	30.4%
Aug-07	64,553	11,303	3,549	31.4%
Sep-07	70,286	9,689	3,328	34.3%
Oct-07	76,100	14,720	4,802	32.6%
Nov-07	80,785	9,796	3,435	35.1%
Dec-07	81,922	8,301	2,985	36.0%
Jan-08	88,947	8,461	2,988	35.3%
Feb-08	81,575	9,303	3,036	32.6%
Mar-08	80,138	12,173	3,907	32.1%
Apr-08	80,463	10,799	3,722	34.5%
May-08	80,478	10,586	3,664	34.6%
Jun-08	80,563	13,566	4,986	36.8%
Jul-08	80,485	8,709	3,372	38.7%
Aug-08	81,281	8,798	3,622	41.2%
Sep-08	82,656	9,892	3,607	36.5%
Oct-08	83,641	9,382	3,686	39.3%
Nov-08	84,485	10,196	3,527	34.6%
Dec-08	85,229	10,071	3,750	37.2%
Jan-09	85,736	10,597	3,795	35.8%
Feb-09	85,916	8,918	3,105	34.8%
Mar-09	86,839	11,043	4,062	36.8%
Apr-09	87,989	10,930	4,070	37.2%
May-09	88,630	9,341	3,199	34.2%
Jun-09	85,518	12,253	4,536	37.0%
Jul-09	80,354	10,920	3,506	32.1%
Aug-09	74,513			

Program was implemented in January 2007.

*The count of applications is a count of work done from cut off date to cut off date (the cut off month). For example, January cut off counts applications processed in that month. Applications received but not processed get pended and counted in subsequent months as they are processed. In addition, total enrollment includes those who have received retroactive coverage. The count of eligibles is based on the month the application was filed.

Note: This report provides a preliminary look at enrollment for any given month. The numbers are not final because it takes about eight months to determine the final count for Medicaid enrollment.

Statewide Medicaid Timeliness

MEDICAID APPLICATIONS			
Month	Disposed	Timely	Percent
Jan-07	179,712	156,175	86.9%
Feb-07	164,664	147,726	89.7%
Mar-07	181,496	164,929	90.9%
Apr-07	227,973	208,135	91.3%
May-07	171,096	159,241	93.1%
Jun-07	152,093	141,813	93.2%
Jul-07	189,414	173,104	91.4%
Aug-07	159,490	146,488	91.8%
Sep-07	147,981	136,483	92.2%
Oct-07	223,472	201,568	90.2%
Nov-07	171,627	151,002	88.0%
Dec-07	151,976	135,369	89.1%
Jan-08	171,694	149,529	87.1%
Feb-08	167,646	144,759	86.3%
Mar-08	211,999	185,811	87.6%
Apr-08	166,128	145,183	87.4%
May-08	171,954	153,989	89.6%
Jun-08	202,387	180,969	89.4%
Jul-08	147,921	132,207	89.4%
Aug-08	158,328	141,329	89.3%
Sep-08	160,316	141,619	88.3%
Oct-08	195,193	164,405	84.2%
Nov-08	160,765	130,650	81.3%
Dec-08	160,733	127,163	79.1%
Jan-09	226,244	175,680	77.7%
Feb-09	189,696	140,443	74.0%
Mar-09	251,238	205,043	81.6%
Apr-09	191,253	160,385	83.9%
May-09	183,888	155,430	84.5%
Jun-09	223,468	178,434	79.8%
Jul-09	169,272	132,780	78.4%
Aug-09	216,706	164,311	75.8%

MEDICAID RENEWALS			
Month	Caseload	Timely	Percent
Jan-07	913,759	908,705	99.4%
Feb-07	914,415	909,789	99.5%
Mar-07	927,526	920,429	99.2%
Apr-07	971,347	962,223	99.1%
May-07	986,212	975,203	98.9%
Jun-07	978,824	965,610	98.7%
Jul-07	987,323	972,491	98.5%
Aug-07	974,738	962,814	98.8%
Sep-07	1,011,920	1,003,664	99.2%
Oct-07	1,042,539	1,037,187	99.5%
Nov-07	1,051,470	1,045,657	99.4%
Dec-07	1,041,281	1,035,048	99.4%
Jan-08	1,026,570	1,019,503	99.3%
Feb-08	1,018,420	1,011,522	99.3%
Mar-08	1,035,446	1,028,589	99.3%
Apr-08	1,030,309	1,023,348	99.3%
May-08	1,041,782	1,034,639	99.3%
Jun-08	1,055,905	1,049,334	99.4%
Jul-08	1,041,867	1,034,851	99.3%
Aug-08	1,038,481	1,030,782	99.3%
Sep-08	1,017,863	1,012,003	99.4%
Oct-08	1,039,298	1,031,130	99.2%
Nov-08	1,051,282	1,042,600	99.2%
Dec-08	1,014,010	1,005,190	99.1%
Jan-09	1,049,438	1,038,169	98.9%
Feb-09	1,053,884	1,042,044	98.9%
Mar-09	1,080,572	1,070,848	99.1%
Apr-09	1,083,885	1,073,574	99.0%
May-09	1,109,890	1,098,198	98.9%
Jun-09	1,138,202	1,126,840	99.0%
Jul-09	1,144,850	1,129,273	98.6%
Aug-09	1,167,911	1,153,952	98.8%

Data provided by HHSC Enterprise Applications

Disposed - the number of applications worked to a decision (approved and/or denied) and provided a benefit if approved.

Timely - the number of applications/reviews disposed within the established time frames for the program. The processing standard for Medicaid is 45 days; 90 days for those who apply on the basis of a disability, and 15 business days for Pregnant Women.

Renewal - consideration of all eligibility criteria for a type program at the end of a certification period to determine ongoing benefits for a new certification period.

Caseload includes the number of active cases which are subject to a scheduled periodic review.

Medicaid Application Timeliness includes Pregnant Women, Children's Medicaid, Medicaid with Spend Down, and the Emergency Medicaid equivalent of these programs.

Medicaid Review Timeliness includes Children's Medicaid, TANF Level Families, and Medically Needy.

Medicaid Application Timeliness

	SAVERR			TIERS		
	Disposed	Timely	% Timely	Disposed	Timely	% Timely
Jan-07	169,691	148,890	87.7%	10,021	7,286	72.7%
Feb-07	149,175	135,271	90.7%	15,489	12,457	80.4%
Mar-07	159,550	146,979	92.1%	21,946	17,951	81.8%
Apr-07	198,427	185,319	93.4%	29,546	22,816	77.2%
May-07	146,961	140,281	95.5%	24,135	18,959	78.6%
Jun-07	132,571	127,179	95.9%	19,522	14,633	75.0%
Jul-07	161,925	154,638	95.5%	27,489	18,471	67.2%
Aug-07	135,191	128,909	95.4%	24,326	17,579	72.3%
Sep-07	127,250	120,576	94.8%	20,731	15,912	76.8%
Oct-07	189,745	176,562	93.1%	33,727	25,006	74.1%
Nov-07	141,784	132,805	93.7%	29,843	18,196	61.0%
Dec-07	127,673	120,020	94.0%	24,303	15,349	63.2%
Jan-08	143,147	133,822	93.5%	28,547	15,705	55.0%
Feb-08	135,966	128,096	94.2%	31,680	16,664	52.6%
Mar-08	169,433	160,913	95.0%	42,584	24,895	58.5%
Apr-08	128,245	120,728	94.1%	37,883	24,452	64.5%
May-08	137,474	129,129	93.9%	34,480	24,859	72.1%
Jun-08	161,542	151,207	93.6%	40,845	29,764	72.9%
Jul-08	117,131	110,312	94.2%	30,790	21,895	71.1%
Aug-08	126,909	119,256	94.0%	31,419	22,075	70.3%
Sep-08	123,960	115,801	93.4%	36,356	25,815	71.0%
Oct-08	148,889	135,474	91.0%	46,304	28,931	62.5%
Nov-08	122,629	106,039	86.5%	38,136	24,616	64.5%
Dec-08	122,488	100,697	82.2%	38,245	26,468	69.2%
Jan-09	175,150	145,951	83.3%	41,400	24,733	59.7%
Feb-09	143,467	111,019	77.4%	46,229	29,430	63.7%
Mar-09	183,303	159,738	87.1%	67,935	45,302	66.7%
Apr-09	137,343	121,103	88.2%	53,910	38,928	72.2%
May-09	135,403	118,974	87.9%	48,485	36,456	75.2%
Jun-09	160,852	135,508	84.2%	62,616	42,926	68.6%
Jul-09	122,137	99,607	81.6%	47,135	33,147	70.3%
Aug-09	159,738	125,633	78.6%	56,968	38,968	68.4%

NOTES:

Disposed - The number of applications worked to a decision (approved and/or denied) and provided a benefit if approved.

Timely - The number of applications disposed within the established time frames for the program.

Medicaid Application Timeliness includes Pregnant Women, Children's Medicaid, Medicaid with Spend Down and the Emergency Medicaid equivalent of these programs.

CHIP Enrollment, Renewal and Disenrollment Rates (January 2009)

	Total Enrollment	New Enrollment	Renewals	Completed Renewal - Deemed Ineligible	Total Disenrollment	Non-Renewals	Actual Renewal Rate	Attempted Renewal Rate	Total Disenrollment Rate
Jan-07	321,815	26,827	29,599	3,554	31,243	12,258	70.7%	73.0%	9.7%
Feb-07	325,479	28,545	27,642	3,178	24,881	9,648	74.1%	76.2%	7.6%
Mar-07	325,090	27,216	18,703	2,878	27,605	11,908	61.1%	64.4%	8.5%
Apr-07	323,069	28,751	23,051	8,364	30,771	14,384	61.6%	68.6%	9.5%
May-07	306,521	26,565	30,106	8,310	43,113	22,683	57.0%	62.9%	14.1%
Jun-07	300,798	26,465	24,615	6,670	32,187	15,848	60.8%	66.4%	10.7%
Jul-07	302,386	30,231	23,756	7,127	28,642	13,399	63.9%	69.7%	9.5%
Aug-07	300,262	27,997	29,391	7,270	30,120	14,038	67.7%	72.3%	10.0%
Sep-07	327,379	50,529	21,423	5,735	23,413	11,227	65.6%	70.8%	7.2%
Oct-07	336,076	34,946	25,516	6,772	26,249	12,874	66.5%	71.5%	7.8%
Nov-07	340,985	34,054	32,440	7,258	29,145	14,031	69.8%	73.9%	8.5%
Dec-07	349,135	33,109	27,069	6,262	24,959	12,434	68.5%	72.8%	7.1%
Jan-08	352,891	30,573	28,079	7,227	26,817	14,438	66.0%	71.0%	7.6%
Feb-08	358,112	32,964	29,242	7,474	27,743	15,019	66.1%	71.0%	7.7%
Mar-08	382,153	29,447	52	16	5,406	4	92.9%	94.4%	1.4%
Apr-08	409,176	35,189	3	2	8,166	2	60.0%	71.4%	2.0%
May-08	427,387	26,412	147	25	8,201	174	45.8%	49.7%	1.9%
Jun-08	444,873	26,429	155	38	8,943	204	43.2%	48.6%	2.0%
Jul-08	463,939	30,476	1,312	273	11,410	759	63.4%	67.6%	2.5%
Aug-08	476,636	23,399	563	145	10,702	240	70.1%	74.7%	2.2%
Sep-08	463,199	24,773	28,363	6,724	38,210	19,477	59.3%	64.3%	8.2%
Oct-08	465,094	31,041	27,607	6,762	29,146	12,370	69.1%	73.5%	6.3%
Nov-08	458,125	27,759	32,286	8,761	34,728	14,335	69.3%	74.1%	7.6%
Dec-08	454,596	25,537	27,466	7,178	29,066	13,117	67.7%	72.5%	6.4%
Jan-09	450,751	26,706	25,638	8,401	30,551	14,007	64.7%	70.8%	6.8%
Feb-09	448,010	31,465	26,287	9,259	34,206	15,296	63.2%	69.9%	7.6%
Mar-09	456,235	29,938	8,507	3,884	21,713	8,949	48.7%	58.1%	4.8%
Apr-09	465,654	37,866	10,531	4,671	28,447	10,474	50.1%	59.2%	6.1%
May-09	474,213	30,901	7,661	2,920	22,342	7,995	48.9%	57.0%	4.7%
Jun-09	481,013	28,576	7,756	2,767	21,776	8,198	48.6%	56.2%	4.5%
Jul-09	487,406	32,375	9,133	3,411	25,982	9,337	49.4%	57.3%	5.3%
Aug-09	490,603	24,783	6,537	2,270	21,587	6,855	48.8%	56.2%	4.4%

Notes:

Disenrollment numbers updated to reflect new Maxe disenrollment codes beginning with Jan-06 data.

Decrease in Renewals and Disenrollment categories beginning with March 2008, reflect the change from 6-month to 12-month enrollment effective September 1, 2007.

Increase in Renewals and Disenrollment categories in September 2008 reflect the first renewal period for those on a 12-month enrollment schedule.

**CHIP Enrollment by Income Group
as of August 2009**

	Number by FPL				Total Enrollment	Percent by FPL			
	<101%	101%-150%	151%-185%	186%-200%		<101%	101%-150%	151%-185%	186%-200%
Jan-07	22,240	165,986	104,106	29,483	321,815	6.9%	51.6%	32.3%	9.2%
Feb-07	22,139	167,925	105,509	29,906	325,479	6.8%	51.6%	32.4%	9.2%
Mar-07	21,986	167,725	105,334	30,045	325,090	6.8%	51.6%	32.4%	9.2%
Apr-07	21,163	166,469	105,419	30,018	323,069	6.6%	51.5%	32.6%	9.3%
May-07	19,511	155,266	102,660	29,084	306,521	6.4%	50.7%	33.5%	9.5%
Jun-07	19,004	152,064	101,654	28,076	300,798	6.3%	50.6%	33.8%	9.3%
Jul-07	19,448	154,018	101,694	27,226	302,386	6.4%	50.9%	33.6%	9.0%
Aug-07	19,118	152,280	102,094	26,770	300,262	6.4%	50.7%	34.0%	8.9%
Sep-07	21,166	172,617	106,216	27,380	327,379	6.5%	52.7%	32.4%	8.4%
Oct-07	21,618	177,890	108,920	27,648	336,076	6.4%	52.9%	32.4%	8.2%
Nov-07	21,706	182,094	109,494	27,691	340,985	6.4%	53.4%	32.1%	8.1%
Dec-07	21,832	187,083	111,859	28,361	349,135	6.3%	53.6%	32.0%	8.1%
Jan-08	21,258	189,155	113,474	29,004	352,891	6.0%	53.6%	32.2%	8.2%
Feb-08	21,278	191,493	115,306	30,035	358,112	5.9%	53.5%	32.2%	8.4%
Mar-08	23,275	205,814	122,096	30,968	382,153	6.1%	53.9%	31.9%	8.1%
Apr-08	24,860	221,216	130,674	32,426	409,176	6.1%	54.1%	31.9%	7.9%
May-08	27,932	232,999	138,792	27,664	427,387	6.5%	54.5%	32.5%	6.5%
Jun-08	29,949	244,018	145,474	25,432	444,873	6.7%	54.9%	32.7%	5.7%
Jul-08	31,828	256,237	152,208	23,666	463,939	6.9%	55.2%	32.8%	5.1%
Aug-08	32,951	264,443	157,155	22,087	476,636	6.9%	55.5%	33.0%	4.6%
Sep-08	30,947	254,903	155,613	21,736	463,199	6.7%	55.0%	33.6%	4.7%
Oct-08	30,579	257,129	154,111	23,275	465,094	6.6%	55.3%	33.1%	5.0%
Nov-08	29,703	252,807	150,476	25,139	458,125	6.5%	55.2%	32.8%	5.5%
Dec-08	29,100	250,539	148,042	26,915	454,596	6.4%	55.1%	32.6%	5.9%
Jan-09	28,600	249,561	144,143	28,447	450,751	6.3%	55.4%	32.0%	6.3%
Feb-09	28,115	248,397	141,363	30,135	448,010	6.3%	55.4%	31.6%	6.7%
Mar-09	29,217	251,991	144,024	31,003	456,235	6.4%	55.2%	31.6%	6.8%
Apr-09	30,756	256,687	148,317	29,894	465,654	6.6%	55.1%	31.9%	6.4%
May-09	32,208	261,432	151,642	28,931	474,213	6.8%	55.1%	32.0%	6.1%
Jun-09	33,658	264,440	155,192	27,723	481,013	7.0%	55.0%	32.3%	5.8%
Jul-09	35,442	267,514	158,216	26,234	487,406	7.3%	54.9%	32.5%	5.4%
Aug-09	36,384	269,591	159,296	25,332	490,603	7.4%	55.0%	32.5%	5.2%

*Note: Sum of income level groups does not equal total enrollment because of enrollees with unknown income level

**CHIP Enrollment by Age Group
as of August 2009**

	Number by Age Group				Total Enrollment	Percent by Age Group			
	<1 Yrs	1-5 Yrs	6-14 Yrs	15-18 Yrs		<1 Yr	1-5 Yrs	6-14 Yrs	15-18 Yrs
Jan-07	646	52,179	200,671	68,319	321,815	0.2%	16.2%	62.4%	21.2%
Feb-07	625	52,813	203,122	68,919	325,479	0.2%	16.2%	62.4%	21.2%
Mar-07	603	52,690	203,046	68,751	325,090	0.2%	16.2%	62.5%	21.1%
Apr-07	570	51,729	201,993	68,777	323,069	0.2%	16.0%	62.5%	21.3%
May-07	529	49,773	191,506	64,713	306,521	0.2%	16.2%	62.5%	21.1%
Jun-07	547	49,266	187,517	63,468	300,798	0.2%	16.4%	62.3%	21.1%
Jul-07	547	49,601	188,416	63,822	302,386	0.2%	16.4%	62.3%	21.1%
Aug-07	524	49,105	187,229	63,404	300,262	0.2%	16.4%	62.4%	21.1%
Sep-07	736	53,616	204,276	68,751	327,379	0.2%	16.4%	62.4%	21.0%
Oct-07	779	55,283	209,643	70,371	336,076	0.2%	16.4%	62.4%	20.9%
Nov-07	798	56,070	212,882	71,235	340,985	0.2%	16.4%	62.4%	20.9%
Dec-07	824	58,097	217,490	72,724	349,135	0.2%	16.6%	62.3%	20.8%
Jan-08	855	58,720	219,950	73,366	352,891	0.2%	16.6%	62.3%	20.8%
Feb-08	902	60,356	222,727	74,127	358,112	0.3%	16.9%	62.2%	20.7%
Mar-08	1,110	65,069	236,521	79,453	382,153	0.3%	17.0%	61.9%	20.8%
Apr-08	1,326	70,626	252,356	84,868	409,176	0.3%	17.3%	61.7%	20.7%
May-08	1,341	74,430	262,658	88,958	427,387	0.3%	17.4%	61.5%	20.8%
Jun-08	1,284	78,078	272,425	93,086	444,873	0.3%	17.6%	61.2%	20.9%
Jul-08	1,273	82,265	283,001	97,400	463,939	0.3%	17.7%	61.0%	21.0%
Aug-08	1,177	84,739	290,099	100,621	476,636	0.2%	17.8%	60.9%	21.1%
Sep-08	1,115	82,529	281,909	97,646	463,199	0.2%	17.8%	60.9%	21.1%
Oct-08	1,093	82,984	283,281	97,736	465,094	0.2%	17.8%	60.9%	21.0%
Nov-08	1,038	81,498	279,568	96,021	458,125	0.2%	17.8%	61.0%	21.0%
Dec-08	976	80,476	277,502	95,642	454,596	0.2%	17.7%	61.0%	21.0%
Jan-09	959	79,116	275,612	95,064	450,751	0.2%	17.6%	61.1%	21.1%
Feb-09	967	78,698	273,918	94,427	448,010	0.2%	17.6%	61.1%	21.1%
Mar-09	981	80,035	278,535	96,684	456,235	0.2%	17.5%	61.1%	21.2%
Apr-09	1,028	81,577	283,934	99,115	465,654	0.2%	17.5%	61.0%	21.3%
May-09	1,050	82,697	289,008	101,458	474,213	0.2%	17.4%	60.9%	21.4%
Jun-09	1,091	83,488	292,980	103,454	481,013	0.2%	17.4%	60.9%	21.5%
Jul-09	1,105	84,085	296,678	105,538	487,406	0.2%	17.3%	60.9%	21.7%
Aug-09	1,077	83,891	298,579	107,056	490,603	0.2%	17.1%	60.9%	21.8%

**CHIP Application Counts by Category for Intake and Completed Applications
January 2007 – July 2009**

	New Application		Renewal Application		Change Application		Total	
	Intake	Completed	Intake	Completed	Intake	Completed	Intake	Completed
Jan-07	13,319	10,264	31,973	26,628	2,785	2,601	48,077	39,493
Feb-07	13,192	11,121	28,963	23,616	2,110	2,077	44,265	36,814
Mar-07	13,991	15,201	27,952	29,079	1,991	2,205	43,934	46,485
Apr-07	13,873	13,832	26,016	33,341	1,704	1,933	41,593	49,106
May-07	14,911	13,890	26,207	25,151	1,545	1,616	42,663	40,657
Jun-07	13,977	12,411	21,260	22,301	1,601	1,482	36,838	36,194
Jul-07	16,737	15,359	23,901	21,310	1,622	1,753	42,260	38,422
Aug-07	21,334	18,248	29,141	28,809	1,560	1,726	52,035	48,783
Sep-07	18,862	18,414	24,008	26,554	1,862	1,820	44,732	46,788
Oct-07	19,719	19,590	26,491	26,287	2,178	2,376	48,388	48,253
Nov-07	14,368	16,667	24,263	23,809	1,918	2,079	40,549	42,555
Dec-07	12,116	15,692	9,989	20,869	1,911	2,048	24,016	38,609
Jan-08	16,023	15,336	2,950	8,092	2,873	2,657	21,846	26,085
Feb-08	17,958	14,978	834	1,171	2,960	2,860	21,752	19,009
Mar-08	16,058	17,294	142	132	3,093	3,187	19,293	20,613
Apr-08	16,735	16,671	938	627	3,489	3,522	21,162	20,820
May-08	15,784	16,563	1,125	672	3,241	3,482	20,150	20,717
Jun-08	15,148	15,100	19,067	13,302	3,109	3,063	37,324	31,465
Jul-08	15,764	16,472	23,171	18,328	3,335	3,336	42,270	38,136
Aug-08	18,713	17,366	28,272	26,423	3,233	3,134	50,218	46,923
Sep-08	17,237	17,099	24,604	28,041	2,853	3,085	44,694	48,225
Oct-08	19,703	19,707	24,801	23,772	3,291	3,477	47,795	46,956
Nov-08	14,132	15,157	23,196	20,441	2,582	2,682	39,910	38,280
Dec-08	15,222	16,561	14,999	18,758	3,091	3,267	33,312	38,586
Jan-09	18,981	16,419	12,334	15,113	4,231	4,016	35,546	35,548
Feb-09	19,319	18,178	10,660	11,624	3,750	3,742	33,729	33,544
Mar-09	19,701	21,428	8,156	11,237	3,968	4,812	31,825	37,477
Apr-09	19,818	21,819	9,565	10,548	3,431	4,599	32,814	36,966
May-09	24,083	19,413	8,692	9,592	4,250	4,208	37,025	33,213
Jun-09	24,857	22,605	18,687	14,376	4,292	4,370	47,836	41,351
Jul-09	26,018	26,078	24,373	19,095	3,593	3,623	53,984	48,796

*The decrease in renewal applications beginning with December 2007, reflects the change from a 6-month to a 12-month enrollment period effective September 1, 2007. This results in fewer families due for renewal.

- Application numbers are based on the month the Application was received. There may be multiple children on one Application and multiple applications per family.
- Application "Intake" measures the number of newly received applications within the reporting month from clients grouped by application category (new, renewal and change).
- Application "Completed" counts applications that have reached a status of "Processing Complete" within the reporting month grouped by application category (new, renewal and change). Applications may reach the "Processing Complete" status due to successful application completion by the client or by "time-out" processing.

Category Descriptions of CHIP Disenrollment Reasons (New Disenrollment Codes)

Categories of Disenrollment	Included Elements
Renewal information not received	1.Renewal information not received
Renewal missing information not rcvd.	1.Renewal missing information not rcvd.
Renewal, income qual. for Medicaid	1.Renewal, income qual. for Medicaid 2.Redetermination, incm qual. for Medical
Renewal, income exceeds CHIP limits	1.Renewal, income exceeds CHIP limits 2.Redetermination, incm exceeds CHIP limit
Subscriber reached 19 years of age or is deceased	1.Subscriber is deceased 2.Subscriber reached 19 years of age
Child no longer living in household or Moved out of state	1.Moved out of State 2.Child no longer living in household
Medicaid Match	1.Medicaid Match
Enrolled erroneously, now disenrolled or duplicate member	1.Enrolled erroneously, now disenrolled 2.Enrolled erroneously, duplicate member
Enrollment Fee not paid or returned NSF	1.Enrollment Fee not paid 2.Enrollment Fee returned NSF
Denied due to other insurance or immigration status	1.Member pregnant, eligible for Medicaid 2.Immigration status, no longer CHIP elig. 3.Employee Sponsored Insurance 4.Renewal, currently on Medicaid 5.Renewal, covered by other insurance 6.Determined SKIP eligible 7.Renewal, ERS eligible
Termination Requested	1.Applicant requested termination 2.HHSC Requested 3.Requested Term at Renewal
Unknown	1.Missing from vendor data

CHIP Disenrollment by Reason - Categorized

	Child no longer living in household or Moved out of state	Immigration status, no longer CHIP elig	Denied due to other insurance	Enrolled erroneously, now disenrolled or duplicate member	Enrollment Fee not paid or returned NSF	Income Verification information not received	Income Verification, exceeds CHIP limits	Medicaid Match	Renewal information not received	Renewal missing information not rcvd.	Renewal, income exceeds CHIP limits	Renewal, income qual. for Medicaid	Subscriber reached 19 years of age or is deceased	Termination Requested	Total Disenrollment
Jan-07	9	0	205	93	2,347	-	-	12,031	9,533	2,725	3,536	18	693	53	31,243
Feb-07	18	1	187	53	3,134	-	-	7,922	8,544	1,104	3,178	0	691	49	24,881
Mar-07	11	1	332	78	3,419	-	-	8,276	6,067	5,841	2,862	16	638	64	27,605
Apr-07	11	0	273	111	213	-	-	6,748	8,084	6,300	3,865	4,499	597	70	30,771
May-07	12	0	332	135	4,398	-	-	6,661	14,725	7,958	4,220	4,090	522	60	43,113
Jun-07	20	0	245	49	3,284	-	-	5,554	8,716	7,132	3,480	3,190	473	44	32,187
Jul-07	9	1	356	30	2,800	-	-	4,360	8,176	5,223	3,412	3,715	504	56	28,642
Aug-07	9	0	409	44	3,429	-	-	4,145	8,425	5,613	3,520	3,750	729	47	30,120
Sep-07	15	0	424	34	1,170	-	-	3,835	6,771	4,456	2,618	3,117	913	60	23,413
Oct-07	22	2	434	30	879	-	-	4,224	6,846	6,028	2,966	3,806	914	98	26,249
Nov-07	19	3	464	54	864	-	-	5,469	7,634	6,397	3,456	3,802	905	78	29,145
Dec-07	20	2	375	63	1,043	-	-	3,842	7,079	5,355	3,131	3,131	838	80	24,959
Jan-08	8	5	293	48	842	-	-	3,058	7,973	6,465	3,789	3,438	821	77	26,817
Feb-08	13	5	285	62	772	-	-	3,192	9,093	5,926	3,630	3,844	831	90	27,743
Mar-08	15	17	110	100	689	-	-	3,641	4	0	13	3	734	80	5,406
Apr-08	19	16	182	126	15	697	789	5,324	2	0	2	0	860	134	8,166
May-08	26	20	138	47	22	1,318	788	4,670	154	20	15	10	851	122	8,201
Jun-08	23	13	188	54	32	1,036	933	5,328	163	41	17	21	983	111	8,943
Jul-08	99	40	283	126	41	839	933	6,895	428	331	184	89	1,009	113	11,410
Aug-08	97	25	325	203	103	888	788	6,538	165	75	115	30	1,238	112	10,702
Sep-08	147	74	661	347	63	1,273	1,011	6,936	13,220	6,257	3,911	2,813	1,383	114	38,210
Oct-08	108	177	699	196	579	610	394	5,710	8,645	3,725	3,637	3,125	1,389	152	29,146
Nov-08	67	134	613	188	896	700	447	7,149	9,445	4,890	4,389	4,372	1,302	136	34,728
Dec-08	77	65	540	180	987	595	326	4,548	8,546	4,571	3,584	3,594	1,241	212	29,066
Jan-09	43	22	417	198	839	549	288	4,536	8,693	5,314	3,457	4,944	1,184	67	30,551
Feb-09	95	45	447	121	720	723	368	5,833	9,075	6,221	3,875	5,384	1,196	103	34,206
Mar-09	48	28	399	123	550	390	241	6,056	5,433	3,516	1,265	2,619	954	91	21,713
Apr-09	127	55	560	148	263	791	572	9,560	6,315	4,159	1,454	3,217	1,138	88	28,447
May-09	97	44	421	58	308	809	650	7,846	4,863	3,132	943	1,977	1,120	74	22,342
Jun-09	62	34	374	77	255	679	511	7,491	5,126	3,072	943	1,824	1,267	61	21,776
Jul-09	70	27	547	124	233	1,105	752	9,075	5,804	3,533	1,148	2,263	1,197	104	25,982
Aug-09	102	29	387	141	326	794	511	8,710	4,045	2,810	839	1,431	1,359	103	21,587

Decreases in the Renewal disenrollment categories beginning with March 2008 reflect the change from 6-month to 12-month enrollment effective September 1, 2007.

Increase in renewal disenrollment categories in September 2008 reflect the first renewal period for those on a 12-month enrollment schedule.

CHIP Disenrollment by Reason - Categorized Percents

	Child no longer living in household or Moved out of state	Immigration status, no longer CHIP elig	Denied due to other insurance	Enrolled erroneously, now disenrolled or duplicate member	Enrollment Fee not paid or returned NSF	Income Verification information not received	Income Verification, exceeds CHIP limits	Medicaid Match	Renewal information not received	Renewal missing information not rcvd.	Renewal, income exceeds CHIP limits	Renewal, income qual. for Medicaid	Subscriber reached 19 years of age or is deceased	Termination Requested
Jan-07	0.0%	0.0%	0.7%	0.3%	7.5%	-	-	38.5%	30.5%	8.7%	11.3%	0.1%	2.2%	0.2%
Feb-07	0.1%	0.0%	0.8%	0.2%	12.6%	-	-	31.8%	34.3%	4.4%	12.8%	0.0%	2.8%	0.2%
Mar-07	0.0%	0.0%	1.2%	0.3%	12.4%	-	-	30.0%	22.0%	21.2%	10.4%	0.1%	2.3%	0.2%
Apr-07	0.0%	0.0%	0.9%	0.4%	0.7%	-	-	21.9%	26.3%	20.5%	12.6%	14.6%	1.9%	0.2%
May-07	0.0%	0.0%	0.8%	0.3%	10.2%	-	-	15.5%	34.2%	18.5%	9.8%	9.5%	1.2%	0.1%
Jun-07	0.1%	0.0%	0.8%	0.2%	10.2%	-	-	17.3%	27.1%	22.2%	10.8%	9.9%	1.5%	0.1%
Jul-07	0.0%	0.0%	1.2%	0.1%	9.8%	-	-	15.2%	28.5%	18.2%	11.9%	13.0%	1.8%	0.2%
Aug-07	0.0%	0.0%	1.4%	0.1%	11.4%	-	-	13.8%	28.0%	18.6%	11.7%	12.5%	2.4%	0.2%
Sep-07	0.1%	0.0%	1.8%	0.1%	5.0%	-	-	16.4%	28.9%	19.0%	11.2%	13.3%	3.9%	0.3%
Oct-07	0.1%	0.0%	1.7%	0.1%	3.3%	-	-	16.1%	26.1%	23.0%	11.3%	14.5%	3.5%	0.4%
Nov-07	0.1%	0.0%	1.6%	0.2%	3.0%	-	-	18.8%	26.2%	21.9%	11.9%	13.0%	3.1%	0.3%
Dec-07	0.1%	0.0%	1.5%	0.3%	4.2%	-	-	15.4%	28.4%	21.5%	12.5%	12.5%	3.4%	0.3%
Jan-08	0.0%	0.0%	1.1%	0.2%	3.1%	-	-	11.4%	29.7%	24.1%	14.1%	12.8%	3.1%	0.3%
Feb-08	0.0%	0.0%	1.0%	0.2%	2.8%	-	-	11.5%	32.8%	21.4%	13.1%	13.9%	3.0%	0.3%
Mar-08	0.3%	0.3%	2.0%	1.8%	12.7%	-	-	67.4%	0.1%	0.0%	0.2%	0.1%	13.6%	1.5%
Apr-08	0.2%	0.2%	2.2%	1.5%	0.2%	8.5%	9.7%	65.2%	0.0%	0.0%	0.0%	0.0%	10.5%	1.6%
May-08	0.3%	0.2%	1.7%	0.6%	0.3%	16.1%	9.6%	56.9%	1.9%	0.2%	0.2%	0.1%	10.4%	1.5%
Jun-08	0.3%	0.1%	2.1%	0.6%	0.4%	11.6%	10.4%	59.6%	1.8%	0.5%	0.2%	0.2%	11.0%	1.2%
Jul-08	0.9%	0.4%	2.5%	1.1%	0.4%	7.4%	8.2%	60.4%	3.8%	2.9%	1.6%	0.8%	8.8%	1.0%
Aug-08	0.9%	0.2%	3.0%	1.9%	1.0%	8.3%	7.4%	61.1%	1.5%	0.7%	1.1%	0.3%	11.6%	1.0%
Sep-08	0.4%	0.2%	1.7%	0.9%	0.2%	3.3%	2.6%	18.2%	34.6%	16.4%	10.2%	7.4%	3.6%	0.3%
Oct-08	0.4%	0.6%	2.4%	0.7%	2.0%	2.1%	1.4%	19.6%	29.7%	12.8%	12.5%	10.7%	4.8%	0.5%
Nov-08	0.2%	0.4%	1.8%	0.5%	2.6%	2.0%	1.3%	20.6%	27.2%	14.1%	12.6%	12.6%	3.7%	0.4%
Dec-08	0.3%	0.2%	1.9%	0.6%	3.4%	2.0%	1.1%	15.6%	29.4%	15.7%	12.3%	12.4%	4.3%	0.7%
Jan-09	0.1%	0.1%	1.4%	0.6%	2.7%	1.8%	0.9%	14.8%	28.5%	17.4%	11.3%	16.2%	3.9%	0.2%
Feb-09	0.3%	0.1%	1.3%	0.4%	2.1%	2.1%	1.1%	17.1%	26.5%	18.2%	11.3%	15.7%	3.5%	0.3%
Mar-09	0.2%	0.1%	1.8%	0.6%	2.5%	1.8%	1.1%	27.9%	25.0%	16.2%	5.8%	12.1%	4.4%	0.4%
Apr-09	0.4%	0.2%	2.0%	0.5%	0.9%	2.8%	2.0%	33.6%	22.2%	14.6%	5.1%	11.3%	4.0%	0.3%
May-09	0.4%	0.2%	1.9%	0.3%	1.4%	3.6%	2.9%	35.1%	21.8%	14.0%	4.2%	8.8%	5.0%	0.3%
Jun-09	0.3%	0.2%	1.7%	0.4%	1.2%	3.1%	2.3%	34.4%	23.5%	14.1%	4.3%	8.4%	5.8%	0.3%
Jul-09	0.3%	0.1%	2.1%	0.5%	0.9%	4.3%	2.9%	34.9%	22.3%	13.6%	4.4%	8.7%	4.6%	0.4%
Aug-09	0.5%	0.1%	1.8%	0.7%	1.5%	3.7%	2.4%	40.3%	18.7%	13.0%	3.9%	6.6%	6.3%	0.5%

Decreases in the Renewal disenrollment categories beginning with March 2008 reflect the change from 6-month to 12-month enrollment effective September 1, 2007. Increase in renewal disenrollment categories in September 2008 reflect the first renewal period for those on a 12-month enrollment schedule.

Reasons for Fluctuations in Disenrollment Categories

Denial Category	Dates	Reason for fluctuation
Denied due to other insurance	May06 – Jan07	Backlog in Children's Medicaid led to fewer CHIP children being matched with Medicaid May 2006 – December 2006. This resulted in lower disenrollment numbers for "Denied due to other insurance" and "Medicaid Match". After backlog resolved, a mass match resulted in increased disenrollment for these reasons January 2007.
Enrollment Fee not paid or returned NSF	May06 – Dec06	Extensions were given May 2006 - November 2006 to children when enrollment fees were not received. This resulted in lower disenrollment numbers for "Enrollment Fee not paid or returned NSF". All extensions stopped in December 2006 resulting in a boost in disenrollment for that month.
	Apr07	The decrease in April 2007 disenrollment for "Enrollment Fee not paid or returned NSF" was due to a system issue with the Enrollment Confirmation Notice.
	Sep07	HB 109 took effect September 2007, resulting in fewer disenrollments for "Enrollment Fee not paid or returned NSF".
Medicaid Match	May06 – Jan07	Backlog in Children's Medicaid led to fewer CHIP children being matched with Medicaid May 2006 – December 2006. This resulted in lower disenrollment numbers for "Denied due to other insurance" and "Medicaid Match". After backlog resolved, a mass match resulted in increased disenrollment for these reasons January 2007.
Renewal information not received	May07	All extensions for children with missing information expired May 2007 resulting in a one time boost in disenrollment for "Renewal information not received".
Renewal missing information not rcvd.	May06 – Feb07	Extensions were given May 2006 - November 2006 to children with missing information. This created a decrease in disenrollment numbers for the "Renewal missing information not rcvd." Disenrollments gradually increased as extensions expired.
Renewal, income qual. for Medicaid	Sep06 – Mar06	Delays in processing Medicaid referrals during September 2006 - March 2007 resulted in retention of children in CHIP until verification process completed. This resulted in lower disenrollment numbers for "Renewal income qual.for Medicaid".
ALL CATEGORIES	Mar08	Decreases in March 2008 Renewal disenrollment categories and total disenrollment reflect the change from 6-month to 12-month enrollment effective September 1, 2007. The increase in percentages seen for non-renewal categories is a result of the lower number of total disenrollment.
Income Verification information not received	Apr08	New category related to 6-month income check for clients with incomes >185% fpl.
Income Verification, exceeds CHIP limits	Apr08	New category related to 6-month income check for clients with incomes >185% fpl.
Renewal disenrollment categories	Sep08	Increase in renewal disenrollment categories in September 2008 reflect the first renewal period for those on a 12-month enrollment schedule.
Renewal income exceeds CHIP limits, Renewal income qual. for Medicaid	Mar09	The decrease in these renewal-related disenrollment categories beginning in March 2009 reflects the smaller pool of clients from March 2008 that were eligible for 12-month renewal in March 2009.

CHIP Perinatal Program Enrollment by Month

CHIP perinatal coverage enrollment numbers are in addition to the numbers of children enrolled in traditional CHIP. CHIP perinatal coverage enrollment numbers are not included in the other CHIP enrollment reports.

	Total Children Enrolled	Total Mothers Enrolled	Total Perinatal Enrollment
Jan-07	4	1,129	1,133
Feb-07	10	2,656	2,666
Mar-07	324	8,358	8,682
Apr-07	612	13,400	14,012
May-07	1,179	18,776	19,955
Jun-07	2,228	23,609	25,837
Jul-07	3,832	27,499	31,331
Aug-07	6,768	28,117	34,885
Sep-07	10,511	30,267	40,778
Oct-07	14,420	29,608	44,028
Nov-07	18,222	29,021	47,243
Dec-07	21,535	28,148	49,683
Jan-08	25,158	28,535	53,693
Feb-08	26,715	28,055	54,770
Mar-08	27,449	29,913	57,362
Apr-08	26,528	30,576	57,104
May-08	25,015	32,061	57,076
Jun-08	25,679	34,407	60,086
Jul-08	24,600	34,862	59,462
Aug-08	24,709	34,068	58,777
Sep-08	26,476	34,477	60,953
Oct-08	25,956	33,450	59,406
Nov-08	26,526	32,929	59,455
Dec-08	27,564	32,614	60,178
Jan-09	28,638	33,037	61,675
Feb-09	28,709	32,628	61,337
Mar-09	28,828	34,327	63,155
Apr-09	27,027	35,127	62,154
May-09	26,248	35,799	62,047
Jun-09	26,971	36,831	63,802
Jul-09	26,527	36,718	63,245

Note: Individuals are enrolled retrospectively (coverage begins the month the person is certified). This causes data available for reporting to be delayed at least one month.

**Migration for Coverage Between CHIP and Medicaid
Monthly Averages**

Children Leaving CHIP and Migrating to Medicaid or Going Back to CHIP

	Number Leaving	During the 12-Month Period Following Leaving CHIP					
		Back to CHIP		To Medicaid		To Either	
		Number	Percent	Number	Percent	Number	Percent
FY00	425	145	34.0%	305	71.7%	355	83.6%
FY01	4,460	1,160	26.0%	2,030	45.5%	2,804	62.9%
FY02	22,424	6,379	28.4%	9,523	42.5%	14,311	63.8%
FY03	25,278	6,844	27.1%	11,557	45.7%	16,341	64.6%
FY04	31,584	6,165	19.5%	13,198	41.8%	17,482	55.4%
FY05	22,257	5,407	24.3%	9,091	40.8%	12,942	58.1%
FY06	23,759	6,580	27.7%	9,002	37.9%	13,748	57.9%
FY07	27,630	8,873	32.1%	10,991	39.8%	17,142	62.0%
FY08	18,801	5,219	27.8%	8,743	46.5%	12,109	64.4%

Children Leaving Medicaid and Migrating to CHIP or Going Back to Medicaid

	Number Leaving	During the 12-Month Period Following Leaving Medicaid					
		Back to Medicaid		To CHIP		To Either	
		Number	Percent	Number	Percent	Number	Percent
FY00	185,856	79,733	42.9%	12,052	6.5%	89,578	48.2%
FY01	62,572	29,095	46.5%	8,770	14.0%	35,750	57.1%
FY02	55,626	28,422	51.1%	6,892	12.4%	33,374	60.0%
FY03	64,325	33,674	52.4%	6,282	9.8%	38,055	59.2%
FY04	73,935	30,377	41.1%	7,591	10.3%	36,336	49.1%
FY05	89,495	45,491	50.8%	9,140	10.2%	51,604	57.7%
FY06	110,359	52,362	47.4%	12,107	11.0%	60,666	55.0%
FY07	107,667	48,324	44.9%	14,913	13.9%	58,840	54.6%
FY08	98,173	47,520	48.4%	17,121	17.4%	60,075	61.2%

Figures reflect the average number per month during the fiscal year.

These figures reflect children leaving CHIP or Medicaid for any reason during the year.

Migration between programs is captured for the year in which the child left one of the programs.

Migration is considered only when a child enters one of the program within the following 12-month period.

Average Length of Coverage in CHIP and Children's Medicaid

	Length of Coverage - CHIP	Length of Coverage - Medicaid
2002	8.4	8.3
2003	8.3	8.9
2004	7.4	8.8
2005	7.5	8.9
2006	7.1	8.7
2007	6.8	8.8
2008	7.5	8.9

These figures represent the number of months an average child is enrolled in the program during the course of the fiscal year.

TANF Cases and Recipients Statewide

TANF Basic and State Program consist of cases which received a benefit in the reporting month, for the reporting month.

TANF Basic is the assistance program for qualifying child-only or single parent families funded with Federal dollars.

TANF State Program assists qualified 2 parent families and is funded with State General Revenue dollars.

	TANF BASIC							TANF STATE PROGRAM						
	Cases	Recipients	Children	Adults	Payments	Average Payment		Cases	Recipients	Children	Adults	Payments	Average Payment	
						Per Case	Recipient						Per Case	Recipient
Jan-07	60,092	140,817	118,890	21,927	\$9,277,652	\$154	\$66	1,535	6,548	3,478	3,070	\$418,988	\$273	\$64
Feb-07	57,333	133,112	113,048	20,064	\$8,758,703	\$153	\$66	1,420	6,072	3,232	2,840	\$392,211	\$276	\$65
Mar-07	56,517	130,765	111,148	19,617	\$8,511,003	\$151	\$65	1,368	5,816	3,080	2,736	\$368,941	\$270	\$63
Apr-07	55,966	129,288	109,948	19,340	\$8,429,435	\$151	\$65	1,323	5,653	3,007	2,646	\$358,803	\$271	\$63
May-07	54,496	125,924	107,093	18,831	\$8,173,904	\$150	\$65	1,268	5,456	2,920	2,536	\$341,911	\$270	\$63
Jun-07	54,818	127,203	107,814	19,389	\$8,220,988	\$150	\$65	1,244	5,359	2,871	2,488	\$334,043	\$269	\$62
Jul-07	54,911	127,847	108,344	19,503	\$8,270,490	\$151	\$65	1,231	5,320	2,858	2,462	\$331,283	\$269	\$62
Aug-07	54,539	127,523	108,177	19,346	\$8,222,350	\$151	\$64	1,252	5,469	2,965	2,504	\$345,088	\$276	\$63
Sep-07	55,212	129,224	109,579	19,645	\$8,360,444	\$151	\$65	1,176	5,128	2,776	2,352	\$322,594	\$274	\$63
Oct-07	56,071	131,491	111,352	20,139	\$8,795,662	\$157	\$67	1,234	5,306	2,838	2,468	\$343,180	\$278	\$65
Nov-07	54,315	126,848	107,812	19,036	\$8,509,651	\$157	\$67	1,167	5,003	2,669	2,334	\$330,502	\$283	\$66
Dec-07	53,745	125,160	106,648	18,512	\$8,421,813	\$157	\$67	1,113	4,766	2,540	2,226	\$317,126	\$285	\$67
Jan-08	52,715	122,341	104,700	17,641	\$8,205,477	\$156	\$67	1,058	4,561	2,445	2,116	\$300,069	\$284	\$66
Feb-08	50,540	116,240	100,246	15,994	\$7,754,541	\$153	\$67	976	4,192	2,240	1,952	\$278,397	\$285	\$66
Mar-08	49,419	113,102	97,892	15,210	\$7,535,479	\$152	\$67	898	3,800	2,004	1,796	\$252,809	\$282	\$67
Apr-08	47,895	109,190	94,798	14,392	\$7,230,974	\$151	\$66	821	3,484	1,842	1,642	\$229,237	\$279	\$66
May-08	48,185	109,908	95,243	14,665	\$7,284,827	\$151	\$66	870	3,662	1,922	1,740	\$240,570	\$277	\$66
Jun-08	47,936	109,538	94,854	14,684	\$7,280,178	\$152	\$66	893	3,776	1,990	1,786	\$246,572	\$276	\$65
Jul-08	46,900	107,712	93,302	14,410	\$7,093,725	\$151	\$66	863	3,634	1,908	1,726	\$238,384	\$276	\$66
Aug-08	48,046	111,515	96,235	15,280	\$7,297,857	\$152	\$65	927	3,909	2,055	1,854	\$252,058	\$272	\$64
Sep-08	47,733	111,068	95,805	15,263	\$7,364,549	\$154	\$66	936	4,015	2,143	1,872	\$265,963	\$284	\$66
Oct-08	47,573	111,400	96,006	15,394	\$7,574,366	\$159	\$68	998	4,290	2,294	1,996	\$287,432	\$288	\$67
Nov-08	47,515	110,942	95,428	15,514	\$7,581,133	\$160	\$68	1,002	4,325	2,321	2,004	\$292,493	\$292	\$68
Dec-08	46,985	109,583	94,301	15,282	\$7,531,455	\$160	\$69	986	4,224	2,252	1,972	\$290,259	\$294	\$69
Jan-09	46,011	107,217	92,332	14,885	\$7,357,584	\$160	\$69	976	4,168	2,216	1,952	\$282,143	\$289	\$68
Feb-09	44,458	102,653	88,918	13,735	\$7,034,704	\$158	\$69	934	4,000	2,132	1,868	\$273,277	\$293	\$68
Mar-09	43,822	100,815	87,533	13,282	\$6,876,352	\$157	\$68	911	3,922	2,100	1,822	\$263,876	\$290	\$67
Apr-09	43,058	98,773	85,815	12,958	\$6,739,777	\$157	\$68	946	4,019	2,127	1,892	\$271,373	\$287	\$68
May-09	43,567	100,114	86,730	13,384	\$6,863,046	\$158	\$69	1,006	4,256	2,244	2,012	\$291,501	\$290	\$68
Jun-09	43,649	100,665	87,015	13,650	\$6,921,302	\$159	\$69	1,023	4,351	2,305	2,046	\$296,712	\$290	\$68
Jul-09	43,204	100,005	86,470	13,535	\$6,828,867	\$158	\$68	1,016	4,294	2,262	2,032	\$290,943	\$286	\$68

Case = designated group of people certified to receive the benefit (can be more than one person).

Recipients = the individuals receiving the benefit.

Children = dependents under the age of 19

Average Payment Per Case = average dollar benefit available to the case (shared by the recipients on that case).

Average Payment Per Recipient = average dollar benefit available to each recipient on a case.

Source: Strategic Decision Support, Health and Human Services Commission

TANF DENIALS

TANF Reasons for Denial	Elements	TANF Reasons for Denial (continued)	Elements
Death of Caretaker		Failure to Furnish Information	
Death of Child		Finger Image Match	
Earnings of Father, Legal or Stepfather		Other Eligibility Requirements	
Earnings of Mother, Legal or Stepmother		Adult Earnings (Refugee Only)	
Earnings of TANF Child		Appointment Not Kept	
Earnings of Non-Parent Caretaker		Unable to Locate	
Support from Absent Father		Refugee Exceeds Eight-Month Limit	
Pursuit of Texas Works Activities		Filed In Error	
Support from Other Person Outside the Home, Including Mother	Child Support; Vendor Payments	Prior Eligibility	Medicaid Eligibility; Federal Time Limits; One Time Payments
Retirement, Survivors, and Disability Insurance (RSDI)		Voluntary Withdrawal	
Other Federal Benefits	Veterans Benefits	Other Miscellaneous	
State and Local Benefits	Pensions; Unemployment Compensation; Workers Compensation	Refusal to Assign Child Support Rights	
Non-Governmental Benefits	Pensions	Provide Absent Parent's Info or Location	
Income		Provide Verification of Citizenship	
Resources		Refusal to Help to Establish Paternity	
Fewer Members in Certified Group		Increased Earnings from Employment Services	
Conflicting Information on Management		Refusal to Comply With Employment Services	Caretaker
Refusal to Furnish Information		Failed to Sign the Responsibility Agreement	
Refusal to Follow Agreed Plan	Requirement to Pursue Income	Refusal/Failure to Provide Finger Images	
Earnings/Child Support Payments Terminate		Time Limit or Hardship Ends/Household Member Disqualified	State Time Limits
TANF-SP Requirements	Deprivation	OT Ineligibility Period	One Time Payments
Federal Time Limits		Income Over 185% FPIL or No Earnings During the Fourth Month Transitional Reporting Period	
Child Admitted to Institution, Including Foster Care		Transitional Medicaid Expired at the End of the 12th Month	
No Eligible Child			
Residence Requirement Not Met			
Citizenship or Acceptable Alien Status			

TANF (Basic and State Program) Applications Report, January 2007 - August 2009 - SAVERR Only*

	Applications Processed	Apps Approved	Application Approval Rate	Total Apps Denied	Case Composition		Income		Assets		Additional Information Not Received ²		Voluntary Withdraw		Citizenship / Alien Status		Other	
					#	%	#	%	#	%	#	%	#	%	#	%	#	%
Jan-07	22,632	5,067	22.4%	17,565	1,717	9.8%	3,778	21.5%	512	2.9%	7,153	40.7%	3,104	17.7%	66	0.4%	1,235	7.0%
Feb-07	24,883	5,237	21.0%	19,646	1,793	9.1%	3,797	19.3%	562	2.9%	8,586	43.7%	3,494	17.8%	78	0.4%	1,336	6.8%
Mar-07	18,632	4,146	22.3%	14,486	1,584	10.9%	3,157	21.8%	477	3.3%	5,365	37.0%	2,848	19.7%	130	0.9%	925	6.4%
Apr-07	19,536	4,325	22.1%	15,211	1,521	10.0%	3,033	19.9%	499	3.3%	6,334	41.6%	2,874	18.9%	80	0.5%	870	5.7%
May-07	25,795	5,467	21.2%	20,328	1,874	9.2%	4,013	19.7%	661	3.3%	8,809	43.3%	3,880	19.1%	93	0.5%	998	4.9%
Jun-07	22,854	4,708	20.6%	18,146	1,613	8.9%	3,092	17.0%	575	3.2%	8,850	48.8%	3,195	17.6%	82	0.5%	739	4.1%
Jul-07	21,708	4,310	19.9%	17,398	1,582	9.1%	2,911	16.7%	545	3.1%	8,476	48.7%	3,082	17.7%	79	0.5%	723	4.2%
Aug-07	27,785	5,684	20.5%	22,101	1,958	8.9%	3,743	16.9%	740	3.3%	10,633	48.1%	4,060	18.4%	89	0.4%	878	4.0%
Sep-07	25,106	5,152	20.5%	19,954	1,868	9.4%	3,489	17.5%	613	3.1%	9,465	47.4%	3,729	18.7%	86	0.4%	704	3.5%
Oct-07	23,399	4,714	20.1%	18,685	1,741	9.3%	3,210	17.2%	578	3.1%	8,974	48.0%	3,450	18.5%	83	0.4%	649	3.5%
Nov-07	32,182	6,413	19.9%	25,769	2,343	9.1%	4,463	17.3%	870	3.4%	12,121	47.0%	4,882	18.9%	106	0.4%	984	3.8%
Dec-07	23,733	4,690	19.8%	19,043	1,790	9.4%	3,225	16.9%	624	3.3%	9,061	47.6%	3,564	18.7%	73	0.4%	706	3.7%
Jan-08	21,340	4,150	19.4%	17,190	1,525	8.9%	2,971	17.3%	542	3.2%	8,297	48.3%	3,114	18.1%	85	0.5%	656	3.8%
Feb-08	23,523	4,271	18.2%	19,252	1,815	9.4%	2,958	15.4%	599	3.1%	9,673	50.2%	3,423	17.8%	88	0.5%	696	3.6%
Mar-08	18,941	3,370	17.8%	15,571	1,561	10.0%	2,498	16.0%	478	3.1%	7,331	47.1%	3,034	19.5%	82	0.5%	587	3.8%
Apr-08	22,598	4,152	18.4%	18,446	2,021	11.0%	2,886	15.6%	498	2.7%	8,732	47.3%	3,528	19.1%	85	0.5%	696	3.8%
May-08	17,629	3,167	18.0%	14,462	1,400	9.7%	2,405	16.6%	395	2.7%	6,757	46.7%	2,919	20.2%	56	0.4%	530	3.7%
Jun-08	19,647	3,493	17.8%	16,154	1,585	9.8%	2,667	16.5%	458	2.8%	7,579	46.9%	3,148	19.5%	102	0.6%	615	3.8%
Jul-08	23,736	4,191	17.7%	19,545	1,984	10.2%	3,153	16.1%	620	3.2%	9,278	47.5%	3,705	19.0%	91	0.5%	714	3.7%
Aug-08	18,579	3,290	21.5%	15,289	1,586	10.4%	2,356	15.4%	554	3.6%	7,160	46.8%	3,001	19.6%	78	0.5%	554	3.6%
Sep-08	20,883	3,757	21.9%	17,126	1,895	11.1%	2,928	17.1%	646	3.8%	7,703	45.0%	3,282	19.2%	74	0.4%	598	3.5%
Oct-08	21,651	3,877	21.8%	17,774	1,883	10.6%	3,123	17.6%	614	3.5%	8,071	45.4%	3,362	18.9%	87	0.5%	634	3.6%
Nov-08	22,818	4,134	22.1%	18,684	1,872	10.0%	3,237	17.3%	541	2.9%	8,756	46.9%	3,494	18.7%	61	0.3%	723	3.9%
Dec-08	19,656	3,634	18.5%	16,022	1,833	11.4%	2,751	17.2%	476	3.0%	7,499	46.8%	2,860	17.9%	56	0.3%	547	3.4%
Jan-09	20,862	3,477	16.7%	17,385	2,059	11.8%	2,990	17.2%	513	3.0%	8,184	47.1%	2,980	17.1%	93	0.5%	566	3.3%
Feb-09	23,018	3,607	15.7%	19,411	2,439	12.6%	3,175	16.4%	609	3.1%	9,024	46.5%	3,490	18.0%	91	0.5%	583	3.0%
Mar-09	19,529	2,953	15.1%	16,576	2,184	13.2%	2,751	16.6%	550	3.3%	7,167	43.2%	3,383	20.4%	92	0.6%	449	2.7%
Apr-09	23,399	3,450	14.7%	19,949	2,655	13.3%	3,201	16.0%	696	3.5%	8,893	44.6%	3,895	19.5%	129	0.6%	540	2.7%
May-09	18,003	2,865	15.9%	15,138	1,926	12.7%	2,536	16.8%	551	3.6%	6,512	43.0%	3,112	20.6%	91	0.6%	410	2.7%
Jun-09	17,502	2,986	17.1%	14,516	1,712	11.8%	2,367	16.3%	541	3.7%	6,418	44.2%	3,002	20.7%	70	0.5%	406	2.8%
Jul-09	21,708	3,401	15.7%	18,307	2,287	12.5%	3,218	17.6%	707	3.9%	7,528	41.1%	3,999	21.8%	52	0.3%	516	2.8%
Aug-09	18,087	2,757	15.2%	15,330	1,972	12.9%	2,612	17.0%	531	3.5%	6,348	41.4%	3,347	21.8%	60	0.4%	460	3.0%
12 month nning Avg.	20,593	3,408	17.5%	17,185	2,060	12.0%	2,907	16.9%	581	3.4%	7,675	44.6%	3,351	19.5%	80	0.5%	536	3.1%

¹ The Application Approval Rate is the number of applications approved divided by the total number of applications processed (= approved + denied).

² Additional information not received includes cases that are automatically closed because the client missed the appointment, did not submit required documentation, or the because application timed out.

³ The "Other" category includes denial reasons that may be specific to only a few programs, or only to a specific condition (like death of a child) and are not easily classified into the main categories. These include:

Death of the child that was on the case	Other – TP45 aged out or mother's income was too high	Other
Auto denial due to the pregnancy being delivered	Refugee at end of 8 month eligibility period	Spenddown
Adult on or applying for TP55 not incapacitated	Filed in error	Citizenship not provided
Eligible child now in institution	Does not meet citizenship or alien status requirements	Voluntary Withdrawal
Residency requirement not met	Open/close	

Note: This report contains SAVERR data only; however, percentages are representative of the statewide programs. Programming is underway and TIERS data will be included as soon as available.

Source: Strategic Decision Support, Health and Human Services Commission

TANF (Basic and State Program) Renewal Report, January 2007 - August 2009 - SAVERR Only

cut off month	Renewals Processed	Renewals Approved	Renewal Approval Rate	Total Cases Denied	Case Composition		Income		Assets		Renewal Information Not Received**		Voluntary Withdraw		Citizenship / Alien Status		Other	
					#	%	#	%	#	%	#	%	#	%	#	%	#	%
Jan-07	5,347	4,602	86.1%	745	31	4.2%	80	10.7%	14	1.9%	461	61.9%	66	8.9%	4	0.5%	89	11.9%
Feb-07	6,304	5,435	86.2%	869	25	2.9%	49	5.6%	11	1.3%	582	67.0%	104	12.0%	4	0.5%	94	10.8%
Mar-07	5,587	4,772	85.4%	815	34	4.2%	75	9.2%	7	0.9%	486	59.6%	86	10.6%	4	0.5%	123	15.1%
Apr-07	5,826	4,999	85.8%	827	27	3.3%	64	7.7%	9	1.1%	533	64.4%	104	12.6%	5	0.6%	85	10.3%
May-07	7,136	6,146	86.1%	990	55	5.6%	92	9.3%	16	1.6%	581	58.7%	144	14.5%	7	0.7%	95	9.6%
Jun-07	5,476	4,681	85.5%	795	51	6.4%	66	8.3%	8	1.0%	506	63.6%	98	12.3%	3	0.4%	63	7.9%
Jul-07	4,946	4,241	85.7%	705	39	5.5%	51	7.2%	6	0.9%	471	66.8%	75	10.6%	3	0.4%	60	8.5%
Aug-07	5,794	4,954	85.5%	840	58	6.9%	71	8.5%	13	1.5%	483	57.5%	102	12.1%	3	0.4%	110	13.1%
Sep-07	5,040	4,308	85.5%	732	31	4.2%	72	9.8%	6	0.8%	430	58.7%	74	10.1%	4	0.5%	115	15.7%
Oct-07	4,431	3,699	83.5%	732	30	4.1%	75	10.2%	4	0.5%	448	61.2%	84	11.5%	2	0.3%	89	12.2%
Nov-07	6,265	5,475	87.4%	790	47	5.9%	79	10.0%	11	1.4%	479	60.6%	108	13.7%	4	0.5%	62	7.8%
Dec-07	4,948	4,241	85.7%	707	25	3.5%	57	8.1%	6	0.8%	480	67.9%	76	10.7%	2	0.3%	61	8.6%
Jan-08	4,521	3,915	86.6%	606	27	4.5%	59	9.7%	6	1.0%	380	62.7%	70	11.6%	5	0.8%	59	9.7%
Feb-08	5,024	4,273	85.1%	751	20	2.7%	79	10.5%	6	0.8%	500	66.6%	87	11.6%	4	0.5%	55	7.3%
Mar-08	4,745	4,003	84.4%	742	30	4.0%	66	8.9%	8	1.1%	495	66.7%	89	12.0%	0	0.0%	54	7.3%
Apr-08	5,579	4,815	86.3%	764	26	3.4%	59	7.7%	11	1.4%	500	65.4%	104	13.6%	4	0.5%	60	7.9%
May-08	4,396	3,711	84.4%	685	23	3.4%	55	8.0%	5	0.7%	458	66.9%	83	12.1%	2	0.3%	59	8.6%
Jun-08	4,526	3,887	85.9%	639	39	6.1%	53	8.3%	7	1.1%	422	66.0%	65	10.2%	5	0.8%	48	7.5%
Jul-08	4,834	4,043	83.6%	791	53	6.7%	56	7.1%	10	1.3%	533	67.4%	86	10.9%	1	0.1%	52	6.6%
Aug-08	3,740	3,176	84.9%	564	30	5.3%	43	7.6%	9	1.6%	390	69.1%	46	8.2%	2	0.4%	44	7.8%
Sep-08	3,717	3,150	84.7%	567	28	4.9%	35	6.2%	8	1.4%	396	69.8%	51	9.0%	2	0.4%	46	8.1%
Oct-08	3,242	2,675	82.5%	567	25	4.4%	41	7.2%	1	0.2%	380	67.0%	52	9.2%	0	0.0%	68	12.0%
Nov-08	3,789	3,243	85.6%	546	18	3.3%	25	4.6%	2	0.4%	396	72.5%	46	8.4%	0	0.0%	59	10.8%
Dec-08	3,503	2,968	84.7%	535	26	4.9%	33	6.2%	1	0.2%	394	73.6%	33	6.2%	2	0.4%	46	8.6%
Jan-09	3,497	2,864	81.9%	633	15	2.4%	45	7.1%	2	0.3%	464	73.3%	53	8.4%	0	0.0%	54	8.5%
Feb-09	3,976	3,285	82.6%	691	23	3.3%	37	5.4%	7	1.0%	509	73.7%	57	8.2%	2	0.3%	56	8.1%
Mar-09	3,665	3,101	84.6%	564	21	3.7%	42	7.4%	5	0.9%	375	66.5%	73	12.9%	1	0.2%	47	8.3%
Apr-09	4,269	3,611	84.6%	658	24	3.6%	48	7.3%	6	0.9%	454	69.0%	85	12.9%	1	0.2%	40	6.1%
May-09	3,398	2,779	81.8%	619	20	3.2%	39	6.3%	7	1.1%	427	69.0%	72	11.6%	4	0.6%	50	8.1%
Jun-09	3,067	2,563	83.6%	504	26	5.2%	44	8.7%	9	1.8%	336	66.7%	47	9.3%	2	0.4%	40	7.9%
Jul-09	3,518	2,954	84.0%	564	31	5.5%	42	7.4%	3	0.5%	378	67.0%	64	11.3%	3	0.5%	43	7.6%
Aug-09	3,060	2,571	84.0%	489	36	7.4%	35	7.2%	4	0.8%	299	61.1%	55	11.2%	1	0.2%	59	12.1%
12 month Running Avg.	3,558	2,980	83.7%	578	24	4.3%	39	6.7%	5	0.8%	401	69.1%	57	9.9%	2	0.3%	51	8.9%

* The Renewal Approval Rate is the number of renewals divided by the total number of reviews processed (= renewals+cases denied).

** Renewal information not received includes cases that are automatically closed because the client missed the appointment, did not submit required documentation, or the because renewal application timed out.

***The "Other" category includes denial reasons that may be specific to only a few programs, or only to a specific condition (like death of a child) and are not easily classified into the main categories. These include:

Death of the child that was on the case	Other – TP45 aged out or mother's income was too high	Filed in error
Auto denial due to the pregnancy being delivered	Refugee at end of 8 month eligibility period	Other
Adult on or applying for TP55 not incapacitated	Residency requirement not met	Spenddown
Eligible child now in institution	Does not meet citizenship or alien status requirements	Citizenship not provided
Open/close		

Note: This report contains SAVERR data only; however, percentages are representative of the statewide programs. Programming is underway and TIERS data will be included as soon as available.

Source: Strategic Decision Support, Health and Human Services Commission

Statewide TANF Timeliness

TANF (TP01) APPLICATIONS			
Month	Disposed	Timely	Percent
Jan-07	23,123	20,490	88.6%
Feb-07	17,360	15,398	88.7%
Mar-07	18,412	17,006	92.4%
Apr-07	24,531	22,945	93.5%
May-07	21,964	20,735	94.4%
Jun-07	21,342	20,190	94.6%
Jul-07	27,066	25,673	94.9%
Aug-07	24,507	23,247	94.9%
Sep-07	22,537	21,286	94.4%
Oct-07	31,232	29,275	93.7%
Nov-07	23,330	21,496	92.1%
Dec-07	20,938	19,033	90.9%
Jan-08	23,101	20,594	89.1%
Feb-08	19,243	16,845	87.5%
Mar-08	23,028	20,664	89.7%
Apr-08	18,755	17,137	91.4%
May-08	20,802	19,242	92.5%
Jun-08	25,601	23,695	92.6%
Jul-08	19,689	18,457	93.7%
Aug-08	22,163	20,888	94.2%
Sep-08	23,022	21,795	94.7%
Oct-08	24,863	22,863	92.0%
Nov-08	21,046	18,418	87.5%
Dec-08	22,636	19,834	87.6%
Jan-09	24,757	21,780	88.0%
Feb-09	21,198	17,864	84.3%
Mar-09	26,525	23,275	87.7%
Apr-09	20,874	18,371	88.0%
May-09	21,167	18,256	86.2%
Jun-09	26,634	21,055	79.1%
Jul-09	22,270	16,596	74.5%
Aug-09	30,004	22,032	73.4%

TANF RENEWALS			
Month	Caseload	Timely	Percent
Jan-07	54,438	52,682	96.8%
Feb-07	52,692	51,589	97.9%
Mar-07	51,474	50,343	97.8%
Apr-07	50,254	49,437	98.4%
May-07	49,970	49,250	98.6%
Jun-07	49,524	48,926	98.8%
Jul-07	49,224	48,623	98.8%
Aug-07	49,719	48,921	98.4%
Sep-07	49,651	48,883	98.5%
Oct-07	49,998	49,077	98.2%
Nov-07	49,850	48,952	98.2%
Dec-07	49,254	48,187	97.8%
Jan-08	47,667	46,412	97.4%
Feb-08	45,994	44,876	97.6%
Mar-08	45,028	43,880	97.5%
Apr-08	44,529	43,447	97.6%
May-08	44,327	43,271	97.6%
Jun-08	43,779	42,832	97.8%
Jul-08	43,226	42,238	97.7%
Aug-08	43,126	42,115	97.7%
Sep-08	43,012	42,082	97.8%
Oct-08	43,523	41,370	95.1%
Nov-08	43,306	41,178	95.1%
Dec-08	42,342	40,582	95.8%
Jan-09	41,548	39,483	95.0%
Feb-09	40,573	38,654	95.3%
Mar-09	40,105	38,387	95.7%
Apr-09	40,105	38,387	95.7%
May-09	40,411	38,319	94.8%
Jun-09	40,293	38,308	95.1%
Jul-09	40,228	37,883	94.2%
Aug-09	41,304	41,303	94.0%

Source: Strategic Decision Support, Health and Human Services Commission

Notes:

Disposed - the number of applications worked to a decision (approved and/or denied) and provided a benefit if approved.

Timely - the number of applications/reviews disposed within the established time frames for the program. The state standard is 45 days for applications. Renewals must be processed by the last month of the 6 month certification period, either before or after cutoff, depending on the periodic review date. The packet is mailed at cutoff in the prior month. If the review form is returned untimely, application timeframes apply.

Renewal - consideration of all eligibility criteria for a type program at the end of a certification period to determine ongoing benefits for a new certification period.

Caseload includes the number of active cases which are subject to a scheduled periodic review.

SNAP Cases and Recipients Statewide by Month

	Number of Cases	Number of Recipients	Recipients: Ages < 5	Recipients: Ages 5 - 17	Recipients: Ages 18 - 59	Recipients: Ages 60 - 64	Recipients: Ages 65 +	Total FS Payments	Avg Pymt / Case
Jan-07	912,635	2,336,599	475,230	846,106	816,794	40,768	157,701	\$213,178,318	\$234
Feb-07	908,870	2,328,218	473,261	843,768	812,455	40,861	157,873	\$211,498,037	\$233
Mar-07	898,452	2,298,425	468,786	831,863	798,977	40,794	158,005	\$208,845,736	\$233
Apr-07	894,871	2,288,013	467,737	827,383	793,459	40,914	158,520	\$208,057,476	\$233
May-07	904,866	2,314,248	475,716	835,879	802,540	41,259	158,854	\$210,828,283	\$233
Jun-07	901,798	2,302,345	473,741	830,031	798,543	41,148	158,882	\$209,799,209	\$233
Jul-07	901,103	2,300,358	473,870	829,861	797,068	41,033	158,526	\$209,860,958	\$233
Aug-07	914,531	2,335,082	480,062	844,826	809,402	41,510	159,282	\$213,448,327	\$234
Sep-07	919,322	2,345,570	481,633	849,820	812,679	41,877	159,561	\$214,560,492	\$234
Oct-07	912,102	2,322,073	474,975	843,187	802,543	41,940	159,428	\$224,139,409	\$246
Nov-07	927,903	2,363,431	483,600	860,023	816,333	42,843	160,632	\$229,990,914	\$248
Dec-07	924,125	2,354,116	482,702	857,231	811,677	42,930	159,576	\$227,824,854	\$247
Jan-08	917,840	2,339,753	479,260	852,865	805,160	43,028	159,440	\$224,535,714	\$245
Feb-08	916,901	2,338,403	477,814	853,459	804,623	43,067	159,440	\$223,640,107	\$244
Mar-08	908,570	2,316,066	473,785	845,206	795,256	42,976	158,843	\$221,390,230	\$244
Apr-08	922,994	2,355,925	483,376	859,041	809,614	43,571	160,323	\$225,457,169	\$244
May-08	917,444	2,339,701	481,193	851,326	803,908	43,362	159,912	\$224,316,820	\$245
Jun-08	920,330	2,349,213	485,324	852,649	807,460	43,389	160,391	\$225,066,892	\$245
Jul-08	955,253	2,448,917	507,102	889,463	845,914	44,285	162,153	\$234,431,620	\$245
Aug-08	985,056	2,525,420	522,741	918,238	876,558	45,011	162,872	\$240,900,034	\$245
Sep-08	1,012,208	2,594,992	536,091	944,831	904,816	45,701	163,553	\$246,917,439	\$244
Oct-08	1,034,942	2,651,370	543,129	967,860	930,012	46,655	163,714	\$281,391,648	\$272
Nov-08	1,228,343	3,184,607	617,924	1,152,332	1,174,718	57,950	181,683	\$345,969,625	\$282
Dec-08	1,128,385	2,931,244	593,948	1,075,593	1,045,314	50,515	165,874	\$313,870,842	\$278
Jan-09	1,130,535	2,934,624	591,429	1,081,820	1,044,482	51,262	165,631	\$311,592,465	\$276
Feb-09	1,091,169	2,820,412	563,227	1,037,768	1,000,555	52,988	165,874	\$298,085,542	\$273
Mar-09	1,075,086	2,775,599	552,569	1,018,279	982,680	55,743	166,328	\$293,563,921	\$273
Apr-09	1,092,799	2,814,340	558,516	1,030,051	998,456	58,440	168,877	\$343,783,630	\$315
May-09	1,084,903	2,780,350	551,588	1,009,732	990,933	58,739	169,358	\$345,172,265	\$318
Jun-09	1,073,187	2,738,231	543,713	985,571	981,068	58,467	169,412	\$339,232,245	\$316
Jul-09	1,098,796	2,805,150	555,751	1,005,762	1,013,126	59,352	171,159	\$345,498,387	\$314
Aug-09	1,099,139	2,802,706	550,732	1,003,274	1,018,465	59,284	170,951	\$343,923,553	\$313

Data Source: Monthly SNAP client level cutoff file

Prepared by Texas Works Reporting Team // Strategic Decision Support // Texas Health & Human Services Commission

Case = designated group of people certified to receive the benefit (can be more than one person).

Recipients = the individuals receiving the benefit.

Average Payment / Case = average dollar benefit available to the case (shared by the recipients on that case).

The SNAP cutoff file contains SAVERR + TIERS cases/recipients certified for benefits as of cutoff in the month preceding the Benefit Month. Cutoff undercount recipients and cases with respect to end-of-month counts. Historically, active cases, cases on hold, & cases automatically denied by response to their redetermination notice was not received by cutoff have been included in case counts as proxy for end-of-month counts. The number of these denials are subsequently certified after cutoff; their inclusion in the case/recipient count is appropriate.

SNAP - Denied Applications by Category

	Case Composition		Income		Assets		Client Action		Voluntary Withdraw		Citizenship		Other		TOTAL
	Cases	%	Cases	%	Cases	%	Cases	%	Cases	%	Cases	%	Cases	%	
Jan-07	156	0.49%	3,194	10.03%	209	0.66%	20,765	65.18%	1,938	6.08%	150	0.47%	5,447	17.10%	31,859
Feb-07	142	0.63%	2,654	11.83%	217	0.97%	13,495	60.16%	1,745	7.78%	140	0.62%	4,039	18.01%	22,432
Mar-07	151	0.55%	2,966	10.87%	193	0.71%	17,373	63.64%	1,757	6.44%	163	0.60%	4,694	17.20%	27,297
Apr-07	160	0.49%	3,818	11.60%	235	0.71%	19,771	60.09%	2,132	6.48%	206	0.63%	6,582	20.00%	32,904
May-07	139	0.52%	3,401	12.74%	217	0.81%	16,097	60.31%	1,825	6.84%	149	0.56%	4,863	18.22%	26,691
Jun-07	119	0.44%	3,424	12.66%	208	0.77%	16,939	62.64%	1,767	6.53%	146	0.54%	4,437	16.41%	27,040
Jul-07	162	0.46%	4,568	13.03%	245	0.70%	21,789	62.14%	2,225	6.35%	197	0.56%	5,876	16.76%	35,062
Aug-07	146	0.49%	4,062	13.67%	237	0.80%	17,984	60.52%	2,065	6.95%	166	0.56%	5,057	17.02%	29,717
Sep-07	224	0.76%	3,805	12.92%	193	0.66%	18,218	61.86%	1,838	6.24%	185	0.63%	4,989	16.94%	29,452
Oct-07	264	0.67%	4,958	12.55%	326	0.83%	23,871	60.43%	2,508	6.35%	209	0.53%	7,369	18.65%	39,505
Nov-07	164	0.54%	3,794	12.59%	218	0.72%	18,609	61.73%	1,891	6.27%	202	0.67%	5,266	17.47%	30,144
Dec-07	140	0.49%	3,371	11.77%	180	0.63%	18,017	62.88%	1,625	5.67%	140	0.49%	5,178	18.07%	28,651
Jan-08	140	0.43%	3,289	10.08%	246	0.75%	20,958	64.25%	1,831	5.61%	184	0.56%	5,973	18.31%	32,621
Feb-08	184	0.73%	2,939	11.71%	234	0.93%	14,903	59.40%	1,798	7.17%	173	0.69%	4,859	19.37%	25,090
Mar-08	180	0.52%	3,677	10.61%	246	0.71%	21,361	61.62%	2,161	6.23%	196	0.57%	6,843	19.74%	34,664
Apr-08	136	0.50%	2,927	10.69%	194	0.71%	16,923	61.83%	1,636	5.98%	136	0.50%	5,416	19.79%	27,369
May-08	136	0.46%	3,405	11.55%	215	0.73%	17,821	60.45%	1,835	6.22%	181	0.61%	5,888	19.97%	29,482
Jun-08	178	0.45%	4,672	11.85%	260	0.66%	23,984	60.84%	2,391	6.07%	209	0.53%	7,727	19.60%	39,421
Jul-08	139	0.47%	3,829	12.86%	231	0.78%	17,618	59.18%	1,855	6.23%	174	0.58%	5,926	19.90%	29,772
Aug-08	168	0.53%	4,371	13.66%	272	0.85%	18,022	56.33%	2,299	7.19%	204	0.64%	6,656	20.81%	31,992
Sep-08	193	0.57%	4,811	14.16%	246	0.72%	19,962	58.76%	2,273	6.69%	197	0.58%	6,292	18.52%	33,974
Oct-08	483	0.61%	31,544	39.71%	777	0.98%	19,797	24.92%	4,723	5.95%	1,173	1.48%	20,938	26.36%	79,435
Nov-08	260	0.51%	11,567	22.84%	320	0.63%	21,598	42.64%	2,109	4.16%	678	1.34%	14,119	27.87%	50,652
Dec-08	175	0.50%	3,995	11.48%	208	0.60%	19,113	54.92%	1,713	4.92%	218	0.63%	9,381	26.95%	34,803
Jan-09	167	0.48%	3,627	10.34%	302	0.86%	19,634	55.98%	1,716	4.89%	204	0.58%	9,421	26.86%	35,071
Feb-09	180	0.64%	2,944	10.44%	326	1.16%	14,865	52.69%	1,718	6.09%	214	0.76%	7,965	28.23%	28,212
Mar-09	229	0.63%	3,829	10.52%	466	1.28%	21,808	59.90%	2,134	5.86%	286	0.79%	7,655	21.03%	36,407
Apr-09	159	0.55%	3,069	10.57%	361	1.24%	17,176	59.14%	1,513	5.21%	225	0.77%	6,542	22.52%	29,045
May-09	150	0.57%	2,760	10.48%	313	1.19%	14,764	56.07%	1,487	5.65%	189	0.72%	6,668	25.32%	26,331
Jun-09	234	0.69%	3,613	10.68%	383	1.13%	18,402	54.37%	1,990	5.88%	273	0.81%	8,948	26.44%	33,843
Jul-09	183	0.66%	2,877	10.39%	239	0.86%	15,259	55.08%	1,676	6.05%	198	0.71%	7,269	26.24%	27,701

Data from the RF-02-4

SAVERR Data only.

Prepared by Texas Health & Human Services Commission / Financial Services / Strategic Decision Support / Texas Works Reporting

SNAP - Denied Renewals by Category

	Case Composition		Income		Assets		Client Action		Renewal Information Not Received*		Voluntary Withdraw		Citizenship		Other		TOTAL
	Cases	%	Cases	%	Cases	%	Cases	%	Cases	%	Cases	%	Cases	%	Cases	%	
Jan-07	187	0.13%	4,275	3.04%	152	0.11%	35,919	25.52%	94,711	67.30%	1,465	1.04%	22	0.02%	3,995	2.84%	140,726
Feb-07	170	0.13%	3,575	2.76%	132	0.10%	25,954	20.07%	94,923	73.41%	1,292	1.00%	23	0.02%	3,245	2.51%	129,314
Mar-07	242	0.18%	3,836	2.89%	150	0.11%	30,579	23.05%	92,929	70.05%	1,267	0.96%	26	0.02%	3,629	2.74%	132,658
Apr-07	258	0.19%	4,665	3.42%	158	0.12%	32,005	23.44%	93,569	68.53%	1,603	1.17%	53	0.04%	4,230	3.10%	136,541
May-07	194	0.16%	3,930	3.20%	146	0.12%	28,319	23.09%	85,086	69.39%	1,292	1.05%	25	0.02%	3,630	2.96%	122,622
Jun-07	198	0.15%	3,637	2.85%	122	0.10%	28,032	21.94%	90,780	71.04%	1,323	1.04%	22	0.02%	3,681	2.88%	127,795
Jul-07	226	0.18%	4,620	3.65%	141	0.11%	33,099	26.18%	81,908	64.79%	1,639	1.30%	30	0.02%	4,765	3.77%	126,428
Aug-07	202	0.16%	3,944	3.16%	141	0.11%	27,476	21.99%	88,117	70.52%	1,348	1.08%	27	0.02%	3,694	2.96%	124,949
Sep-07	179	0.14%	3,911	2.97%	116	0.09%	27,888	21.18%	94,883	72.05%	1,246	0.95%	37	0.03%	3,439	2.61%	131,699
Oct-07	302	0.21%	4,624	3.24%	126	0.09%	33,478	23.45%	98,241	68.82%	1,631	1.14%	31	0.02%	4,321	3.03%	142,754
Nov-07	223	0.16%	4,067	2.98%	132	0.10%	30,344	22.25%	96,866	71.03%	1,220	0.89%	31	0.02%	3,481	2.55%	136,364
Dec-07	162	0.12%	3,847	2.77%	102	0.07%	29,553	21.26%	101,362	72.93%	1,079	0.78%	34	0.02%	2,847	2.05%	138,986
Jan-08	181	0.13%	3,770	2.71%	123	0.09%	32,576	23.43%	97,833	70.37%	1,223	0.88%	26	0.02%	3,290	2.37%	139,022
Feb-08	214	0.16%	3,418	2.62%	113	0.09%	26,270	20.14%	95,925	73.55%	1,467	1.12%	14	0.01%	2,996	2.30%	130,417
Mar-08	261	0.20%	3,987	3.09%	128	0.10%	30,307	23.46%	89,325	69.14%	1,483	1.15%	22	0.02%	3,687	2.85%	129,200
Apr-08	196	0.14%	3,003	2.22%	101	0.07%	25,976	19.18%	101,987	75.30%	1,156	0.85%	23	0.02%	2,995	2.21%	135,437
May-08	163	0.13%	3,278	2.60%	104	0.08%	27,512	21.80%	91,103	72.18%	1,005	0.80%	22	0.02%	3,023	2.40%	126,210
Jun-08	276	0.34%	3,720	4.61%	118	0.15%	29,692	36.83%	41,386	51.33%	1,410	1.75%	17	0.02%	4,003	4.97%	80,622
Jul-08	141	0.21%	2,627	3.83%	83	0.12%	18,390	26.84%	42,549	62.10%	1,055	1.54%	14	0.02%	3,654	5.33%	68,513
Aug-08	155	0.21%	2,832	3.91%	62	0.09%	17,337	23.93%	47,378	65.41%	1,028	1.42%	23	0.03%	3,620	5.00%	72,435
Sep-08	164	0.21%	3,047	3.86%	67	0.08%	17,582	22.28%	53,587	67.91%	1,029	1.30%	26	0.03%	3,403	4.31%	78,905
Oct-08	214	0.12%	3,206	1.80%	82	0.05%	14,199	7.95%	154,724	86.66%	1,287	0.72%	30	0.02%	4,791	2.68%	178,533
Nov-08	211	0.23%	3,212	3.48%	93	0.10%	12,637	13.67%	70,436	76.22%	1,133	1.23%	23	0.02%	4,666	5.05%	92,411
Dec-08	210	0.14%	3,361	2.24%	108	0.07%	15,564	10.38%	125,196	83.49%	1,162	0.77%	30	0.02%	4,321	2.88%	149,952
Jan-09	251	0.16%	4,104	2.67%	164	0.11%	30,079	19.60%	113,555	73.99%	1,261	0.82%	41	0.03%	4,012	2.61%	153,467
Feb-09	216	0.15%	3,622	2.54%	121	0.08%	25,341	17.76%	109,015	76.42%	1,124	0.79%	37	0.03%	3,175	2.23%	142,651
Mar-09	204	0.14%	4,114	2.75%	165	0.11%	28,988	19.40%	111,053	74.33%	1,347	0.90%	49	0.03%	3,484	2.33%	149,404
Apr-09	180	0.11%	2,922	1.85%	138	0.09%	25,195	15.95%	125,415	79.41%	958	0.61%	28	0.02%	3,089	1.96%	157,925
May-09	158	0.11%	2,835	1.90%	161	0.11%	23,270	15.57%	119,022	79.62%	871	0.58%	29	0.02%	3,144	2.10%	149,490
Jun-09	176	0.12%	3,343	2.26%	137	0.09%	25,985	17.59%	113,556	76.89%	1,183	0.80%	37	0.03%	3,277	2.22%	147,694
Jul-09	156	0.11%	2,646	1.90%	114	0.08%	20,874	14.99%	111,745	80.24%	965	0.69%	42	0.03%	2,728	1.96%	139,270

* Renewal information not received includes cases that are automatically closed because the client did not submit renewal or the because application timed out.

Data from the RF-02-4

SAVERR Data only.

Prepared by Texas Health & Human Services Commission / Financial Services / Strategic Decision Support / Texas Works Reporting

Statewide SNAP Timeliness

SNAP APPLICATIONS			
Month	Disposed	Timely	Percent
Jan-07	127,375	107,814	84.6%
Feb-07	102,574	88,767	86.5%
Mar-07	111,101	99,529	89.6%
Apr-07	135,357	124,323	91.8%
May-07	114,561	106,692	93.1%
Jun-07	111,434	103,112	92.5%
Jul-07	141,468	130,718	92.4%
Aug-07	123,637	112,597	91.1%
Sep-07	108,835	95,619	87.9%
Oct-07	153,883	132,186	85.9%
Nov-07	122,361	104,724	85.6%
Dec-07	115,036	97,110	84.4%
Jan-08	133,146	110,623	83.1%
Feb-08	112,168	92,388	82.4%
Mar-08	143,791	119,253	82.9%
Apr-08	116,701	98,747	84.6%
May-08	123,162	106,136	86.2%
Jun-08	154,179	135,315	87.8%
Jul-08	114,890	102,547	89.3%
Aug-08	112,520	100,475	89.3%
Sep-08	112,779	101,988	90.4%
Oct-08	332,515	202,329	60.8%
Nov-08	158,686	87,467	55.1%
Dec-08	108,534	87,664	80.8%
Jan-09	121,263	98,039	80.8%
Feb-09	118,048	91,937	77.9%
Mar-09	163,160	124,717	76.4%
Apr-09	137,486	108,188	78.7%
May-09	130,435	95,782	73.4%
Jun-09	165,605	110,329	66.6%
Jul-09	131,317	82,429	62.8%
Aug-09	171,250	104,907	61.3%

SNAP RENEWALS			
Month	Disposed	Timely	Percent
Jan-07	91,020	83,508	91.7%
Feb-07	72,878	67,494	92.6%
Mar-07	80,164	74,857	93.4%
Apr-07	96,110	91,479	95.2%
May-07	84,008	80,663	96.0%
Jun-07	79,138	76,160	96.2%
Jul-07	88,854	85,017	95.7%
Aug-07	74,010	70,845	95.7%
Sep-07	72,055	69,249	96.1%
Oct-07	95,665	90,647	94.8%
Nov-07	87,605	83,722	95.6%
Dec-07	80,870	76,590	94.7%
Jan-08	85,047	79,862	93.9%
Feb-08	83,662	78,823	94.2%
Mar-08	94,403	88,204	93.4%
Apr-08	82,538	77,816	94.3%
May-08	90,981	84,544	92.9%
Jun-08	81,237	75,632	93.1%
Jul-08	38,036	35,886	94.3%
Aug-08	39,676	37,924	95.6%
Sep-08	42,940	40,910	95.3%
Oct-08	37,376	34,852	93.2%
Nov-08	24,365	22,548	92.5%
Dec-08	31,013	27,400	88.4%
Jan-09	95,187	85,218	89.6%
Feb-09	94,393	78,894	83.6%
Mar-09	107,513	86,169	80.1%
Apr-09	91,240	77,587	85.0%
May-09	94,805	74,465	78.5%
Jun-09	110,181	72,307	65.6%
Jul-09	95,648	62,483	65.3%
Aug-09	118,913	76,783	64.6%

Data provided by HHSC Enterprise Applications

Notes:

Disposed - the number of applications worked to a decision (approved and/or denied) and provided a benefit if approved.

Timely - the number of applications disposed within the established time frames for the program. Regulations mandate 30 days for non-expedited SNAP applications and Texas statute requires 24-hour processing for expedited applications. Renewal forms received by the 15th of the last month of certification must be completed by the last day in that month. If forms are received after that date, the 30-day timeframe applies. If the appointment is missed, the case may be completed after the end of the month. Exception: Renewal after a short certification period - 30 days after last full monthly issuance, unless the appointment is missed.

SNAP Application Timeliness includes Expedited SNAP Applications.

Renewal - consideration of all eligibility criteria for a type program at the end of a certification period to determine ongoing benefits for a new certification period.

SNAP Application Timeliness

	SAVERR			TIERS		
	Disposed	Timely	% Timely	Disposed	Timely	% Timely
Jan-07	118,477	101,014	85.3%	8,898	6,800	76.4%
Feb-07	94,749	82,628	87.2%	7,828	6,139	78.4%
Mar-07	102,134	92,256	90.3%	8,967	7,273	81.1%
Apr-07	122,460	113,592	92.8%	12,897	10,731	83.2%
May-07	102,603	96,755	94.3%	11,958	9,937	83.1%
Jun-07	98,579	92,933	94.3%	12,855	10,179	79.2%
Jul-07	125,743	118,046	93.9%	15,725	12,672	80.6%
Aug-07	108,839	101,293	93.1%	14,798	11,304	76.4%
Oct-07	135,183	121,808	90.1%	18,700	10,378	55.5%
Nov-07	106,783	96,742	90.6%	15,578	7,982	51.2%
Dec-07	100,393	90,153	89.8%	14,643	6,957	47.5%
Jan-08	114,483	102,678	89.7%	18,663	7,945	42.6%
Feb-08	93,514	85,092	91.0%	18,654	7,296	39.1%
Mar-08	119,212	109,226	91.6%	24,579	10,027	40.8%
Apr-08	95,306	88,255	92.6%	21,395	10,522	49.2%
May-08	102,248	92,782	90.7%	20,914	13,354	63.9%
Jun-08	130,055	118,131	90.8%	24,124	17,184	71.2%
Jul-08	96,768	88,846	91.8%	18,122	13,701	75.6%
Aug-08	95,056	86,894	91.4%	17,464	13,581	77.8%
Sep-08	94,656	87,763	92.7%	18,123	14,225	78.5%
Oct-08	295,579	174,348	59.0%	36,936	27,981	75.8%
Nov-08	138,831	74,389	53.6%	19,855	13,078	65.9%
Dec-08	90,499	74,057	81.8%	18,035	13,607	75.4%
Jan-09	100,305	82,333	82.1%	20,958	15,706	74.9%
Feb-09	95,584	75,669	79.2%	22,464	16,268	72.4%
Mar-09	128,197	99,804	77.9%	34,963	24,913	71.3%
Apr-09	108,049	86,083	79.7%	29,437	22,105	75.1%
May-09	99,714	73,501	73.7%	30,721	22,281	72.5%
Jun-09	123,915	81,994	66.2%	41,690	28,335	68.0%
Jul-09	98,580	59,234	60.1%	32,734	23,195	70.9%
Aug-09	130,731	75,026	57.4%	40,519	29,881	73.7%

Disposed - the number of applications worked to a decision (approved and/or denied) and provided a benefit if approved.

Timely - the number of applications disposed within the established time frames for the program. Regulations mandate 30 days for non-expedited SNAP applications and Texas statute requires 24-hour processing for expedited applications.

SNAP Application Timeliness includes Expedited SNAP Applications.

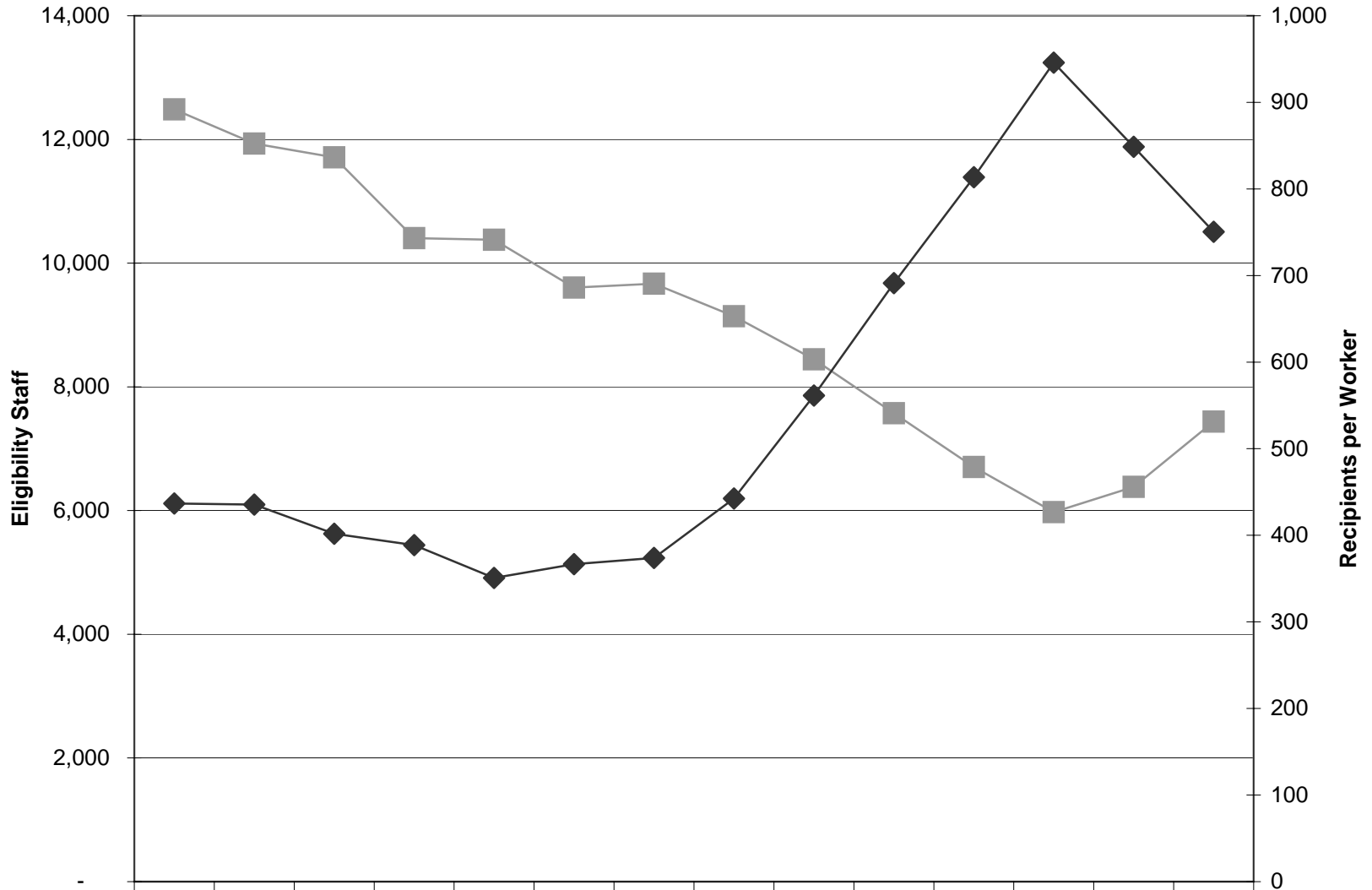
SNAP Renewal Timeliness

	SAVERR			TIERS		
	Disposed	Timely	% Timely	Disposed	Timely	% Timely
Jan-07	86,975	80,153	92.2%	4,045	3,355	82.9%
Feb-07	69,388	64,492	92.9%	3,490	3,002	86.0%
Mar-07	76,199	71,731	94.1%	3,965	3,126	78.8%
Apr-07	90,759	87,116	96.0%	5,351	4,363	81.5%
May-07	78,906	76,868	97.4%	5,102	3,795	74.4%
Jun-07	73,489	71,968	97.9%	5,649	4,192	74.2%
Jul-07	82,416	80,213	97.3%	6,438	4,804	74.6%
Aug-07	67,587	65,986	97.6%	6,423	4,859	75.7%
Oct-07	89,715	85,850	95.7%	5,950	4,797	80.6%
Nov-07	81,432	78,729	96.7%	6,173	4,993	80.9%
Dec-07	75,929	72,909	96.0%	4,941	3,681	74.5%
Jan-08	80,644	76,795	95.2%	4,403	3,067	69.7%
Feb-08	78,098	74,782	95.8%	5,564	4,041	72.6%
Mar-08	86,027	82,152	95.5%	8,376	6,052	72.3%
Apr-08	72,751	70,087	96.3%	9,787	7,729	79.0%
May-08	80,380	75,845	94.4%	10,601	8,699	82.1%
Jun-08	71,876	67,933	94.5%	9,361	7,699	82.2%
Jul-08	33,546	32,099	95.7%	4,490	3,787	84.3%
Aug-08	35,042	33,860	96.6%	4,634	4,064	87.7%
Sep-08	38,547	37,130	96.3%	4,393	3,780	86.0%
Oct-08	32,066	30,388	94.8%	5,310	4,464	84.1%
Nov-08	19,939	18,749	94.0%	4,426	3,799	85.8%
Dec-08	24,441	21,616	88.4%	6,572	5,784	88.0%
Jan-09	78,953	71,734	90.9%	16,234	13,534	83.4%
Feb-09	77,257	65,212	84.4%	17,136	13,682	79.8%
Mar-09	83,498	67,472	80.8%	24,015	18,697	77.9%
Apr-09	71,766	61,038	85.1%	19,474	16,549	85.0%
May-09	74,625	58,270	78.1%	20,180	16,195	80.3%
Jun-09	85,117	53,126	62.4%	25,064	19,181	76.5%
Jul-09	74,128	45,649	61.6%	21,520	16,834	78.2%
Aug-09	93,762	56,503	60.3%	25,151	20,280	80.6%

Disposed - the number of renewals worked to a decision (approved and/or denied).

Timely - Renewal forms received by the 15th of the last month of certification must be completed by the last day in that month. If forms are received after that date, the 30-day timeframe applies. If the appointment is missed, the case may be completed after the end of the month. Exception: Renewal after a short certification period - 30 days after last full monthly issuance, unless the appointment is missed.

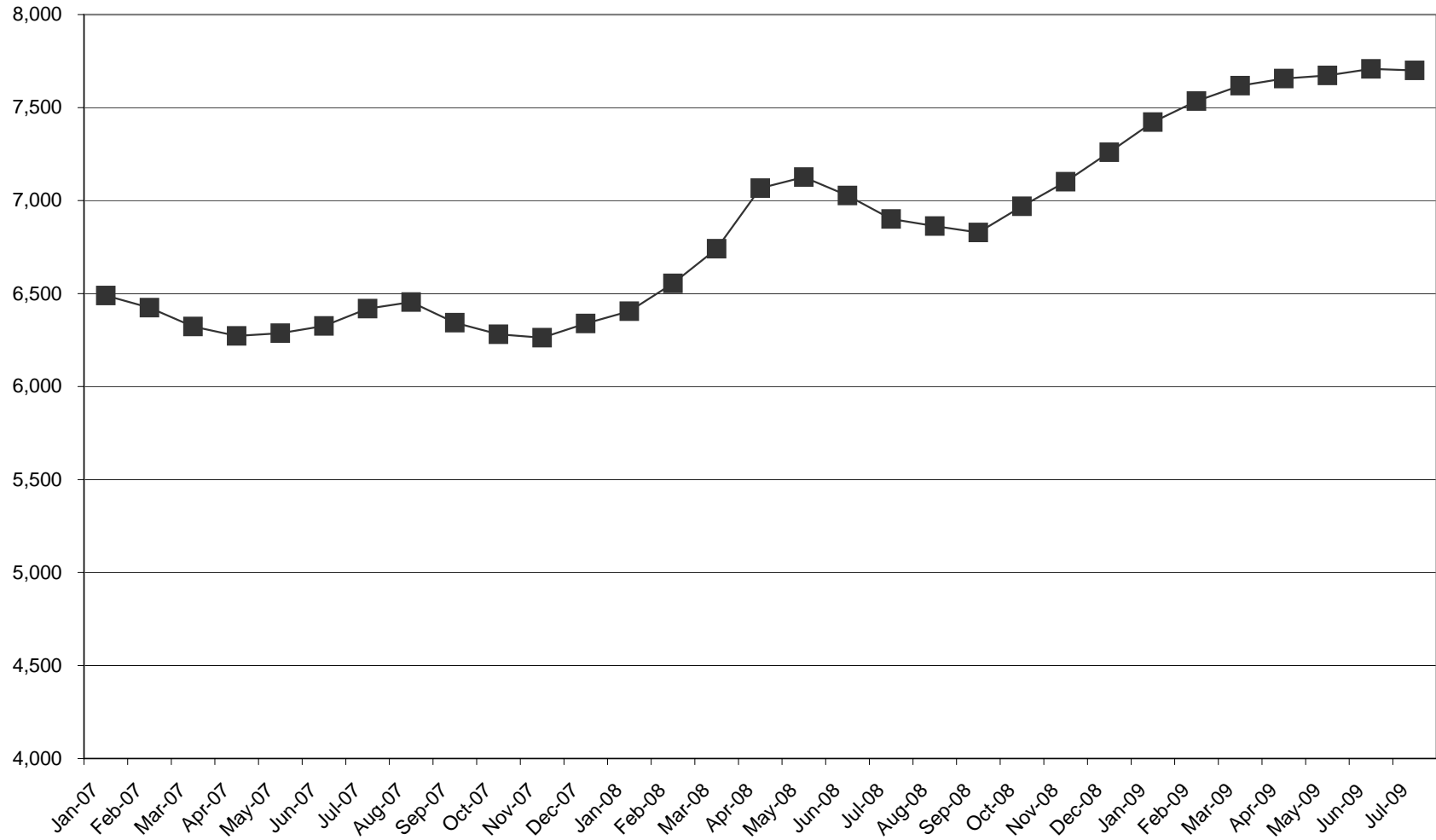
**Average Eligibility Determination Staffing and Average Recipients Per Worker
FY 1995 - FY 2008**



■ Eligibility Staff	12,487	11,933	11,710	10,404	10,378	9,606	9,668	9,142	8,446	7,573	6,703	5,975	6,382	7,438
◆ Recipients Per Worker	437	436	402	389	351	367	374	442	561	691	814	946	849	750

*The initial budget plan approved in July 2007 called for 7,136 staff. The current level of 7,438 was approved in February 2008.

January 2007 - July 2009 Eligibility Determination Staff Head Count



The current eligibility determination staffing target for the FY 2008-2009 biennium is 7,438, approved February 2008. HHSC was given authority within H.B. 1, 80th Legislature (Article II, HHSC, Riders 54 and 68), to increase staffing levels above the target to support the eligibility system.

Head Count = the number of people on the payroll for services rendered in the listed month. It is a person count; not FTE count. Eligibility services typically has few part time employees.

HHSC Eligibility Determination Staff Turnover

Eligibility Determination Staff Turnover by Job Title

Job Title	FY 2006			FY 2007			FY 2008		
	Number of Losses	Average Strength	Turnover Rate	Number of Losses	Average Strength	Turnover Rate	Number of Losses	Average Strength	Turnover Rate
Clerks	545	1,423.25	38.3%	345	1,466.50	23.5%	333	1,560	21.3%
Workers	1250	4,337.25	28.8%	996	4,479.00	22.2%	1,061	4,771	22.2%
Supervisors	71	301.50	23.5%	27	328.25	8.2%	25	411	6.1%
Certification Technicians	68	131.75	51.6%	94	226.50	41.5%	27	45	60.3%
Other	29	108.50	26.7%	11	102.25	10.8%	13	146	8.9%
Total	1,963	6,302.25	31.1%	1,473	6,602.50	22.3%	1,459	6,932	21.0%

Job Title	1st Quarter FY 2009				2nd Quarter FY 2009				3rd Quarter FY 2009			
	Number of Losses	Annualized Losses	Average Strength	Turnover Rate	Number of Losses	Annualized Losses	Average Strength	Turnover Rate	Number of Losses	Annualized Losses	Average Strength	Turnover Rate
Clerks	59	236	1,644	14.4%	73	292	1,815	16.1%	68	272	1,862	14.6%
Workers	219	876	5,025	17.4%	192	768	5,228	14.7%	225	900	5,348	16.8%
Supervisors	8	32	438	7.3%	8	32	458	7.0%	11	44	476	9.2%
Certification Technicians	0	0	0	0.0%	0	0	0	0.0%	0	0	0	0.0%
Other	4	16	207	7.7%	0	0	232	0.0%	3	12	239	5.0%
Total	290	1,160	7,314	15.9%	273	1,092	7,733	14.1%	307	1,228	7,925	15.5%

The turnover data includes permanent and non-permanent (temporary) status employees.

Number of Losses: The count of the number of people whose employment with HHSC ended during the year and were in eligibility determination positions

Average Strength: The count of the number of active employees on the last day of each quarter plus the number of separations

Turnover Rate: Number of Losses divided by average strength.

Eligibility Determination Staff Turnover by Region

Region	FY 2006			FY 2007			FY 2008			1st Quarter FY 2009			
	Number of Losses	Average Strength	Turnover Rate	Number of Losses	Average Strength	Turn-over Rate	Number of Losses	Average Strength	Turnover Rate	Number of Losses	Annualized Losses	Average Strength	Turnover Rate
Region 1	74	228.75	32.3%	54	255.75	21.1%	47	238	19.8%	8	32	228	14.0%
Region 2 & 9	112	356.50	31.4%	87	392.00	22.2%	82	394	20.8%	29	116	407	28.5%
Region 3	431	1,161.25	37.1%	276	1,108.75	24.9%	267	1,168	22.9%	54	216	1,170	18.5%
Region 4	135	329.75	40.9%	86	356.50	24.1%	75	380	19.7%	19	76	396	19.2%
Region 5	94	274.75	34.2%	86	301.00	28.6%	89	304	29.3%	12	48	297	16.2%
Region 6	333	1,211.25	27.5%	371	1,297.50	28.6%	330	1,365	24.2%	69	276	1,462	18.9%
Region 7	357	826.00	43.2%	208	877.00	23.7%	240	1,070	22.4%	45	180	1,083	16.6%
Region 8	177	635.00	27.9%	128	700.50	18.3%	159	674	23.6%	24	96	695	13.8%
Region 10	61	398.25	15.3%	42	403.00	10.4%	58	415	14.0%	13	52	486	10.7%
Region 11	189	880.75	21.5%	135	910.50	14.8%	112	926	12.1%	17	68	1,090	6.2%
Total	1,963.00	6,302.25	31.1%	1,473	6,602.50	22.3%	1,459	6,932	21.0%	290	1,160	7,314	15.9%

Region	1st Quarter FY 2009				2nd Quarter FY 2009				3rd Quarter FY 2009			
	Number of Losses	Annualized Losses	Average Strength	Turnover Rate	Number of Losses	Annualized Losses	Average Strength	Turnover Rate	Number of Losses	Annualized Losses	Average Strength	Turnover Rate
Region 1	8	32	228	14.0%	10	40	234	17.1%	8	32	240	13.3%
Region 2 & 9	29	116	407	28.5%	15	60	431	13.9%	21	84	459	18.3%
Region 3	55	220	1,170	18.8%	35	140	1,216	11.5%	64	256	1,268	20.2%
Region 4	19	76	396	19.2%	17	68	408	16.7%	13	52	408	12.7%
Region 5	12	48	297	16.2%	16	64	301	21.3%	18	72	307	23.5%
Region 6	69	276	1,462	18.9%	62	248	1,552	16.0%	69	276	1,590	17.4%
Region 7	45	180	1,083	16.6%	44	176	1,142	15.4%	37	148	1,138	13.0%
Region 8	24	96	695	13.8%	23	92	759	12.1%	31	124	803	15.4%
Region 10	13	52	486	10.7%	13	52	524	9.9%	13	52	526	9.9%
Region 11	17	68	1,090	6.2%	38	152	1,166	13.0%	33	132	1,186	11.1%
Total	291	1,164	7,314	15.9%	273	1,092	7,733	14.1%	307	1,228	7,925	15.5%

The turnover data includes permanent and non-permanent (temporary) status employees.

Number of Losses: The count of the number of people whose employment with HHSC ended during the year and were in eligibility determination positions

Average Strength: The count of the number of active employees on the last day of each quarter plus the number of separations

Turnover Rate: Number of Losses divided by average strength.

Turnover Rates for Selected Groups of Eligibility Determination Staff

Group	FY 2007			FY 2008		
	Losses	Average Strength	Turn-over Rate	Losses	Average Strength	Turnover Rate
ART	13	182	7.1%	17	202	8.4%
Call Center	13	104	12.5%	53	194	27.3%
CBS	9	42	21.4%	5	45	11.2%
CPC	60	147.75	40.6%	30	116	25.9%
Fair Hearings	0	8.75	0.0%	3	73	4.1%
MEPD	183	791.75	23.1%	158	781	20.2%

Group	1st Quarter FY 2009				2nd Quarter FY 2009				3rd Quarter FY 2009			
	Losses	Annualized Losses	Average Strength	Turnover Rate	Losses	Annualized Losses	Average Strength	Turnover Rate	Losses	Annualized Losses	Average Strength	Turnover Rate
ART	2	8	188	4.3%	1	4	184	2.2%	2	8	191	4.2%
Call Center	23	92	239	38.5%	22	88	279	31.5%	28	112	302	37.1%
CBS	1	4	56	7.1%	3	12	66	18.2%	3	12	63	19.0%
CPC	1	4	112	3.6%	7	28	122	23.0%	2	8	122	6.6%
Fair Hearings	0	0	90	0.0%	1	4	101	4.0%	0	0	103	0.0%
MEPD	36	144	962	15.0%	29	116	1,007	11.5%	43	172	1,024	16.8%

ART = Assistance Response Team: ART manages the maintenance of TIERS cases for households in non-TIERS counties. This includes applications and renewals. The assistance response team was implemented for the Integrated Eligibility and Enrollment pilot rollout in January 2006.

Call Center = Customer Care in the Call Centers: The centers process client and agency-generated changes for statewide TIERS clients. In addition, the centers process applications and renewals for children's Medicaid-only TIERS cases. Customer care centers were implemented with the Integrated Eligibility and Enrollment pilot rollout in January 2006.

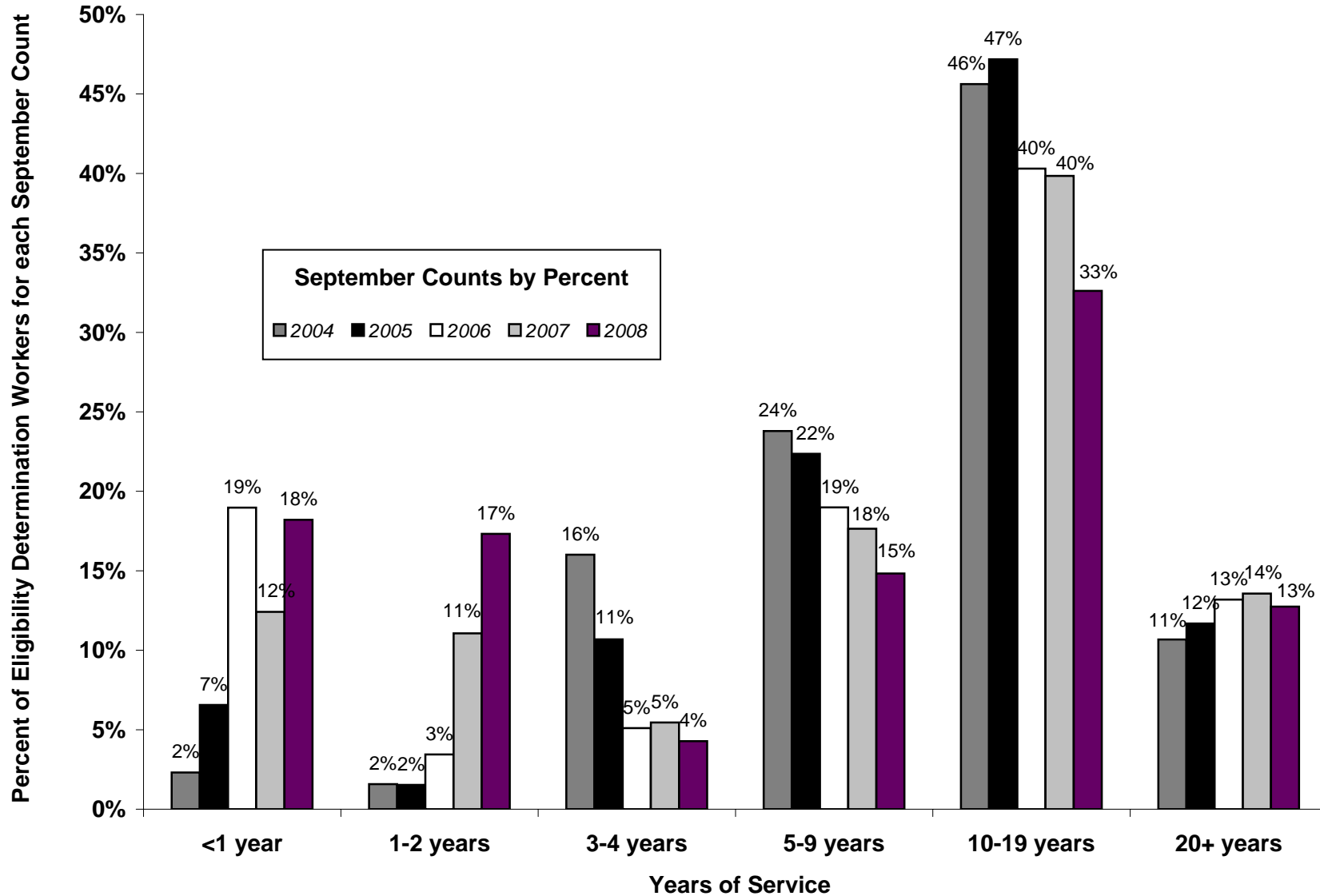
CBS = Centralized Benefit Services: Processes food stamp cases for Supplemental Security Income-only households using specialized automation that reduces verification requirements for these households. The unit also processes Special Nutrition Assistance Program food stamp cases.

CPC = CHIP Processing and Referral Unit: This unit processes all Medicaid referrals received from the CHIP vendor. Staff in a centralized Austin location process Medicaid applications to ensure children are Medicaid-eligible the month after their CHIP coverage ends. The first unit was implemented in 2002 and was expanded in 2006.

Fair Hearings = The fair hearing units manage case preparation and provide agency representation for fair hearings statewide. The units began in September 2007.

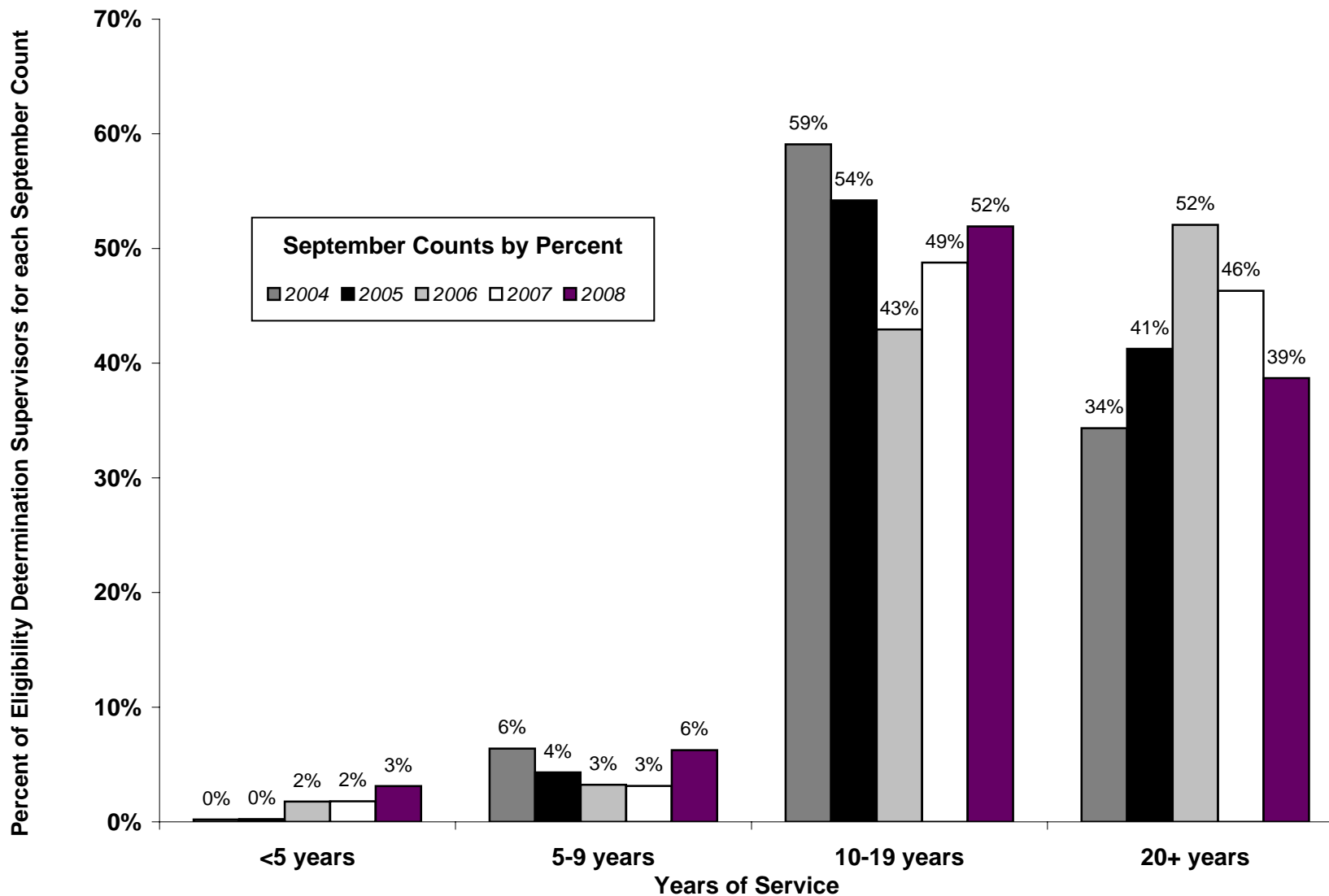
MEPD = Medicaid for the Elderly and People with Disabilities: processes applications for the Medicaid for the Elderly and Persons with Disabilities (MEPD) Program. This unit was established in January 2007.

Eligibility Determination Workers, Years of Service September Counts by Percent: 2004 - 2008



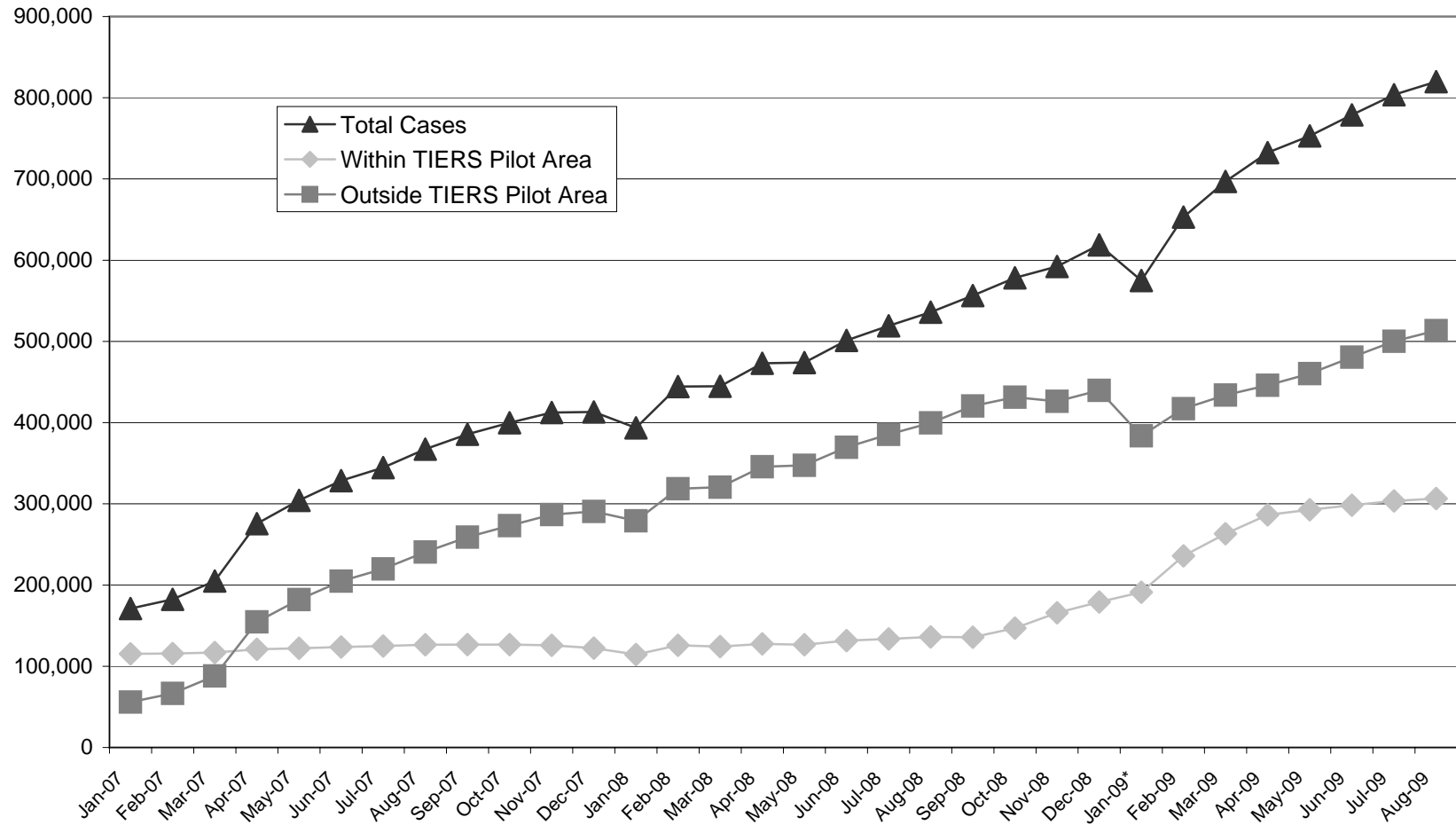
Note: Years of service include all years of state service, not just years as an eligibility worker.

Eligibility Determination Supervisors, Years of Service September Counts by Percent: 2004 - 2008



Note: Years of service include all years of state service, not just years as a supervisor.

TIERS Active Cases by Household



A case refers to a single program type. A person or household may have multiple cases if they qualify for more than one program, such as a family that receives both Food Stamps and Medicaid. Therefore, the number of cases does not represent an unduplicated number of clients. IRollout in pilot area (Region 7) began in October 2008 and continued through February 2009.

TIERS Active Cases per Household January 2007 - August 2009

	Total Cases	Within TIERS Pilot Area	Outside TIERS Pilot Area	% Within TIERS Pilot Area
Jan-07	171,165	115,311	55,854	67.4%
Feb-07	182,386	115,768	66,618	63.5%
Mar-07	204,972	116,850	88,122	57.0%
Apr-07	275,639	120,914	154,725	43.9%
May-07	304,245	122,216	182,029	40.2%
Jun-07	328,554	123,814	204,740	37.7%
Jul-07	344,681	124,917	219,764	36.2%
Aug-07	367,263	126,582	240,681	34.5%
Sep-07	385,727	126,774	258,953	32.9%
Oct-07	399,901	126,671	273,230	31.7%
Nov-07	412,485	125,786	286,699	30.5%
Dec-07	413,088	122,381	290,707	29.6%
Jan-08	393,592	114,527	279,065	29.1%
Feb-08	444,492	125,866	318,626	28.3%
Mar-08	444,827	124,302	320,525	27.9%
Apr-08	473,105	127,515	345,590	27.0%
May-08	473,892	126,495	347,397	26.7%
Jun-08	501,250	131,645	369,605	26.3%
Jul-08	519,199	133,734	385,465	25.8%
Aug-08	535,897	136,219	399,678	25.4%
Sep-08	556,368	135,819	420,549	24.4%
Oct-08	578,343	146,990	431,353	25.4%
Nov-08	592,180	165,863	426,317	28.0%
Dec-08	618,795	179,139	439,656	28.9%
Jan-09*	574,997	191,239	383,758	33.3%
Feb-09	653,093	236,005	417,088	36.1%
Mar-09	697,001	263,110	433,891	37.7%
Apr-09	732,475	286,488	445,987	39.1%
May-09	753,010	292,638	460,372	38.9%
Jun-09	778,820	298,290	480,530	38.3%
Jul-09	803,702	303,521	500,181	37.8%
Aug-09	819,832	306,520	513,312	37.4%

Eligibility Determination Group (EDG) — Members of a household whose needs, resources, incomes, and deductions are considered in determining eligibility for benefits. The EDG includes members who are eligible, and may include members who are not eligible for benefits.

*January 2009 is an interpolation of December 2008, January 2009 and February 2009.

Quality Control Monthly Report

Federal Fiscal Year (FFY) to Date 2009 Comparison with FFY 2008

Program*	FFY 2009 Error Rates Validated Thru 03/2009	FFY 2008 Error Rates Validated Thru 03/2008	FFY Comparison of Validated Data
SNAP Positive	12.58%	5.79%	↑6.78%
SNAP Negative	18.84%	20.07%	↓1.23%
TANF	10.47%	14.64%	↓4.17%
Children's Medicaid Positive	4.62%	6.71%	↓1.45%
Children's Medicaid Negative	6.61%	7.88%	↓1.27%

FFY 2008 - 2007 Comparison

Program*	FFY 2008 Validated Thru 09/2008	FFY 2007** Error Rates Validated Thru 09/2007	FFY Comparison of Validated Data
SNAP Positive	7.03%	6.30%	↓0.06%
SNAP Negative	20.30%	17.97%	↑6.53%
TANF	12.86%	15.47%	↑4.25%
Children's Medicaid Positive	***	6.51%	
Children's Medicaid Negative	7.88%	13.72%	↑4.92%

* All findings and data are subject to revision and update.

**FFY 2007 SNAP error rates validated by FNS. All other error rates are state findings.

***Children's Medicaid Positive Pilot was initiated April 2008. No data is available for sample months October 2007 – March 2008.

SNAP Positive: the error rate is applied to active cases and is defined as a payment error rate. The payment error rate is calculated by the allotments in error (ineligible, over and underpayments) divided by the total allotments reviewed.

SNAP Negative: the error rate is defined as a case error rate. The case error rate is calculated by the number of cases denied in error divided by the number of cases reviewed.

TANF: this is a positive error rate applied to active cases and is defined as a payment error rate. The payment error rate is calculated by the dollars in error (over-issued and ineligible) divided by the total dollars reviewed.

Children's Medicaid Positive: the error rate is defined as an eligibility error rate, calculated by the number of cases certified in error divided by the number of cases reviewed.

Children's Medicaid Negative: the error rate is defined as a case error rate. The case error rate is calculated by the number of cases denied in error divided by the number of cases reviewed.

